

Ribberør 2HE

GoGetNo : 6971

Family Types Preset

1. Type - K33-73-08-2HE

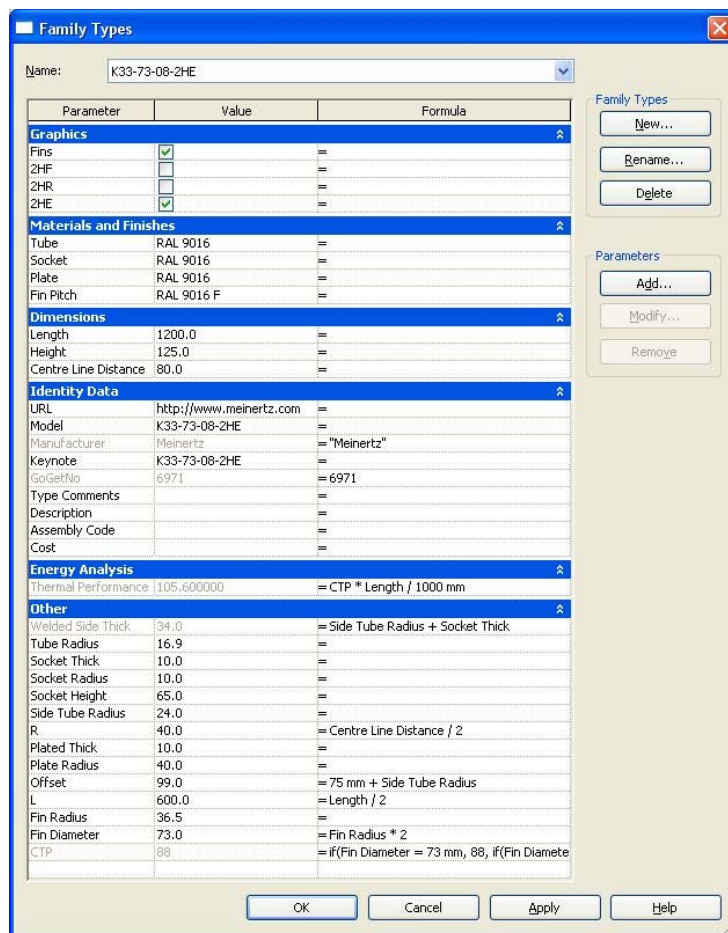


Figure A.01
 Type - K33-73-08-2HE
 Family Parameter Reference

2. Type - K33-73-08-2HF

Family Types

Name: K33-73-08-2HF

Parameter	Value	Formula
Graphics		
Fins	<input checked="" type="checkbox"/>	=
2HF	<input checked="" type="checkbox"/>	=
2HR	<input type="checkbox"/>	=
2HE	<input type="checkbox"/>	=
Materials and Finishes		
Tube	RAL 9016	=
Socket	RAL 9016	=
Plate	RAL 9016	=
Fin Pitch	RAL 9016 F	=
Dimensions		
Length	1200.0	=
Height	125.0	=
Centre Line Distance	80.0	=
Identity Data		
URL	http://www.meinertz.com	=
Model	K33-73-08-2HF	=
Manufacturer	Meinertz	= "Meinertz"
Keynote	K33-73-08-2HF	=
GoGetNo	6971	= 6971
Type Comments		=
Description		=
Assembly Code		=
Cost		=
Energy Analysis		
Thermal Performance	105.600000	= CTP * Length / 1000 mm
Other		
Welded Side Thick	34.0	= Side Tube Radius + Socket Thick
Tube Radius	16.9	=
Socket Thick	10.0	=
Socket Radius	10.0	=
Socket Height	65.0	=
Side Tube Radius	24.0	=
R	40.0	= Centre Line Distance / 2
Plated Thick	10.0	=
Plate Radius	40.0	=
Offset	99.0	= 75 mm + Side Tube Radius
L	600.0	= Length / 2
Fin Radius	36.5	=
Fin Diameter	73.0	= Fin Radius * 2
CTP	88	= if(Fin Diameter = 73 mm, 88, if(Fin Diamete

Family Types: New..., Rename..., Delete

Parameters: Add..., Modify..., Remove

OK Cancel Apply Help

Figure A.02
Type - K33-73-08-2HF
Family Parameter Reference

3. Type - K33-73-08-2HR

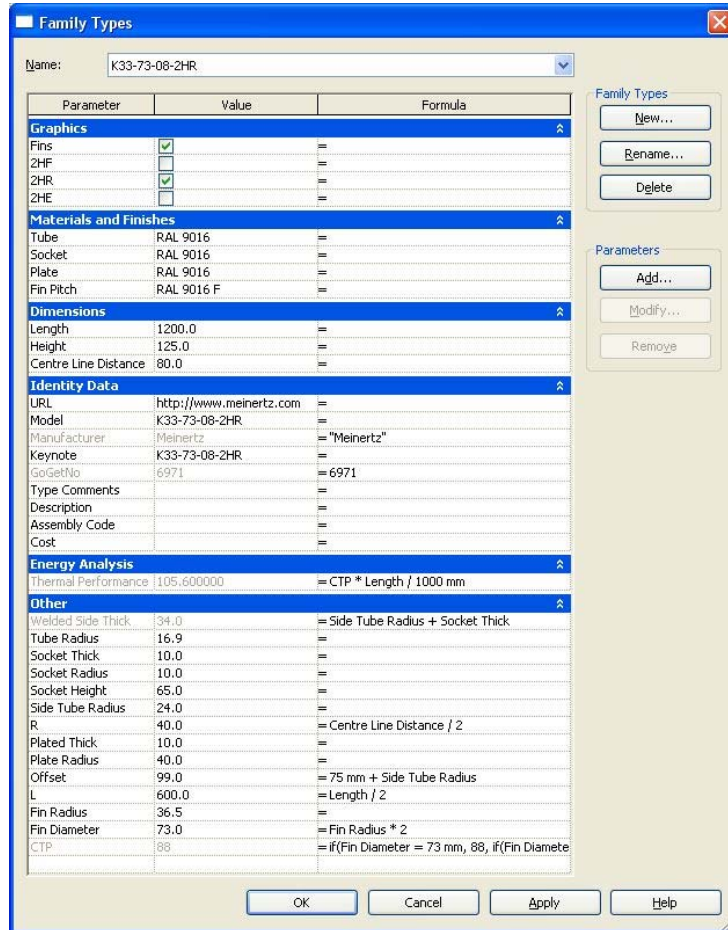


Figure A.03
Type - K33-73-08-2HR
Family Parameter Reference

4. Type - K33-83-10-2HE

Family Types

Name: K33-83-10-2HE

Parameter	Value	Formula
Graphics		
Fins	<input checked="" type="checkbox"/>	=
2HF	<input type="checkbox"/>	=
2HR	<input type="checkbox"/>	=
2HE	<input checked="" type="checkbox"/>	=
Materials and Finishes		
Tube	RAL 9016	=
Socket	RAL 9016	=
Plate	RAL 9016	=
Fin Pitch	RAL 9016 F	=
Dimensions		
Length	1200.0	=
Height	125.0	=
Centre Line Distance	90.0	=
Identity Data		
URL	http://www.meinertz.com	=
Model	K33-83-10-2HE	=
Manufacturer	Meinertz	"Meinertz"
Keynote	K33-83-10-2HE	=
GoGetNo	6971	= 6971
Type Comments		=
Description		=
Assembly Code		=
Cost		=
Energy Analysis		
Thermal Performance	124.800000	= CTP * Length / 1000 mm
Other		
Welded Side Thick	34.0	= Side Tube Radius + Socket Thick
Tube Radius	16.9	=
Socket Thick	10.0	=
Socket Radius	10.0	=
Socket Height	65.0	=
Side Tube Radius	24.0	=
R	45.0	= Centre Line Distance / 2
Plated Thick	10.0	=
Plate Radius	40.0	=
Offset	99.0	= 75 mm + Side Tube Radius
L	600.0	= Length / 2
Fin Radius	41.5	=
Fin Diameter	83.0	= Fin Radius * 2
CTP	104	= if (Fin Diameter = 73 mm, 88, if (Fin Diamete

Family Types: New..., Rename..., Delete

Parameters: Add..., Modify..., Remove

OK Cancel Apply Help

Figure A.04
 Type - K33-83-08-2HE
 Family Parameter Reference

5. Type - K33-83-10-2HF

Family Types

Name: K33-83-10-2HF

Parameter	Value	Formula
Graphics		
Fins	<input checked="" type="checkbox"/>	=
2HF	<input checked="" type="checkbox"/>	=
2HR	<input type="checkbox"/>	=
2HE	<input type="checkbox"/>	=
Materials and Finishes		
Tube	RAL 9016	=
Socket	RAL 9016	=
Plate	RAL 9016	=
Fin Pitch	RAL 9016 F	=
Dimensions		
Length	1200.0	=
Height	125.0	=
Centre Line Distance	90.0	=
Identity Data		
URL	http://www.meinertz.com	=
Model	K33-83-10-2HF	=
Manufacturer	Meinertz	"Meinertz"
Keynote	K33-83-10-2HF	=
GoGetNo	6971	= 6971
Type Comments		=
Description		=
Assembly Code		=
Cost		=
Energy Analysis		
Thermal Performance	124.800000	= CTP * Length / 1000 mm
Other		
Welded Side Thick	34.0	= Side Tube Radius + Socket Thick
Tube Radius	16.9	=
Socket Thick	10.0	=
Socket Radius	10.0	=
Socket Height	65.0	=
Side Tube Radius	24.0	=
R	45.0	= Centre Line Distance / 2
Plated Thick	10.0	=
Plate Radius	40.0	=
Offset	99.0	= 75 mm + Side Tube Radius
L	600.0	= Length / 2
Fin Radius	41.5	=
Fin Diameter	83.0	= Fin Radius * 2
CTP	104	= if (Fin Diameter = 73 mm, 88, if (Fin Diamete

Family Types: New..., Rename..., Delete

Parameters: Add..., Modify..., Remove

OK Cancel Apply Help

Figure A.05
 Type - K33-83-08-2HF
 Family Parameter Reference

6. Type - K33-83-10-2HR

Family Types

Name: K33-83-10-2HR

Parameter	Value	Formula
Graphics		
Fins	<input checked="" type="checkbox"/>	=
2HF	<input type="checkbox"/>	=
2HR	<input checked="" type="checkbox"/>	=
2HE	<input type="checkbox"/>	=
Materials and Finishes		
Tube	RAL 9016	=
Socket	RAL 9016	=
Plate	RAL 9016	=
Fin Pitch	RAL 9016 F	=
Dimensions		
Length	1200.0	=
Height	125.0	=
Centre Line Distance	90.0	=
Identity Data		
URL	http://www.meinertz.com	=
Model	K33-83-10-2HR	=
Manufacturer	Meinertz	"Meinertz"
Keynote	K33-83-10-2HR	=
GoGetNo	6971	= 6971
Type Comments		=
Description		=
Assembly Code		=
Cost		=
Energy Analysis		
Thermal Performance	124.800000	= CTP * Length / 1000 mm
Other		
Welded Side Thick	34.0	= Side Tube Radius + Socket Thick
Tube Radius	16.9	=
Socket Thick	10.0	=
Socket Radius	10.0	=
Socket Height	65.0	=
Side Tube Radius	24.0	=
R	45.0	= Centre Line Distance / 2
Plated Thick	10.0	=
Plate Radius	40.0	=
Offset	99.0	= 75 mm + Side Tube Radius
L	600.0	= Length / 2
Fin Radius	41.5	=
Fin Diameter	83.0	= Fin Radius * 2
CTP	104	= if (Fin Diameter = 73 mm, 88, if (Fin Diamete

Family Types: New..., Rename..., Delete

Parameters: Add..., Modify..., Remove

OK Cancel Apply Help

Figure A.06
 Type - K33-83-08-2HR
 Family Parameter Reference

7. Type - K42-92-10-2HE

Family Types

Name: K42-92-10-2HE

Parameter	Value	Formula
Graphics		
Fins	<input checked="" type="checkbox"/>	=
2HF	<input type="checkbox"/>	=
2HR	<input type="checkbox"/>	=
2HE	<input checked="" type="checkbox"/>	=
Materials and Finishes		
Tube	RAL 9016	=
Socket	RAL 9016	=
Plate	RAL 9016	=
Fin Pitch	RAL 9016 F	=
Dimensions		
Length	1200.0	=
Height	125.0	=
Centre Line Distance	100.0	=
Identity Data		
URL	http://www.meinertz.com	=
Model	K42-92-10-2HE	=
Manufacturer	Meinertz	"Meinertz"
Keynote	K42-92-10-2HE	=
GoGetNo	6971	= 6971
Type Comments		=
Description		=
Assembly Code		=
Cost		=
Energy Analysis		
Thermal Performance	105.600000	= CTP * Length / 1000 mm
Other		
Welded Side Thick	40.0	= Side Tube Radius + Socket Thick
Tube Radius	21.2	=
Socket Thick	10.0	=
Socket Radius	10.0	=
Socket Height	65.0	=
Side Tube Radius	30.0	=
R	50.0	= Centre Line Distance / 2
Plated Thick	10.0	=
Plate Radius	45.0	=
Offset	105.0	= 75 mm + Side Tube Radius
L	600.0	= Length / 2
Fin Radius	46.0	=
Fin Diameter	92.0	= Fin Radius * 2
CTP	88	= if(Fin Diameter = 73 mm, 88, if(Fin Diamete

Family Types: New..., Rename..., Delete

Parameters: Add..., Modify..., Remove

OK Cancel Apply Help

Figure A.07
 Type – K42-92-10-2HE
 Family Parameter Reference

8. Type - K42-92-10-2HF

Family Types

Name: K42-92-10-2HF

Parameter	Value	Formula
Graphics		
Fins	<input checked="" type="checkbox"/>	=
2HF	<input checked="" type="checkbox"/>	=
2HR	<input type="checkbox"/>	=
2HE	<input type="checkbox"/>	=
Materials and Finishes		
Tube	RAL 9016	=
Socket	RAL 9016	=
Plate	RAL 9016	=
Fin Pitch	RAL 9016 F	=
Dimensions		
Length	1200.0	=
Height	125.0	=
Centre Line Distance	100.0	=
Identity Data		
URL	http://www.meinertz.com	=
Model	K42-92-10-2HF	=
Manufacturer	Meinertz	"Meinertz"
Keynote	K42-92-10-2HF	=
GoGetNo	6971	= 6971
Type Comments		=
Description		=
Assembly Code		=
Cost		=
Energy Analysis		
Thermal Performance	105.600000	= CTP * Length / 1000 mm
Other		
Welded Side Thick	40.0	= Side Tube Radius + Socket Thick
Tube Radius	21.2	=
Socket Thick	10.0	=
Socket Radius	10.0	=
Socket Height	65.0	=
Side Tube Radius	30.0	=
R	50.0	= Centre Line Distance / 2
Plated Thick	10.0	=
Plate Radius	45.0	=
Offset	105.0	= 75 mm + Side Tube Radius
L	600.0	= Length / 2
Fin Radius	46.0	=
Fin Diameter	92.0	= Fin Radius * 2
CTP	88	= if(Fin Diameter = 73 mm, 88, if(Fin Diamete

Family Types: New..., Rename..., Delete

Parameters: Add..., Modify..., Remove

OK Cancel Apply Help

Figure A.08
 Type – K42-92-10-2HF
 Family Parameter Reference

9. Type - K42-92-10-2HR

Family Types

Name: K42-92-10-2HR

Parameter	Value	Formula
Graphics		
Fins	<input checked="" type="checkbox"/>	=
2HF	<input type="checkbox"/>	=
2HR	<input checked="" type="checkbox"/>	=
2HE	<input type="checkbox"/>	=
Materials and Finishes		
Tube	RAL 9016	=
Socket	RAL 9016	=
Plate	RAL 9016	=
Fin Pitch	RAL 9016 F	=
Dimensions		
Length	1200.0	=
Height	125.0	=
Centre Line Distance	100.0	=
Identity Data		
URL	http://www.meinertz.com	=
Model	K42-92-10-2HR	=
Manufacturer	Meinertz	"Meinertz"
Keynote	K42-92-10-2HR	=
GoGetNo	6971	= 6971
Type Comments		=
Description		=
Assembly Code		=
Cost		=
Energy Analysis		
Thermal Performance	105.600000	= CTP * Length / 1000 mm
Other		
Welded Side Thick	40.0	= Side Tube Radius + Socket Thick
Tube Radius	21.2	=
Socket Thick	10.0	=
Socket Radius	10.0	=
Socket Height	65.0	=
Side Tube Radius	30.0	=
R	50.0	= Centre Line Distance / 2
Plated Thick	10.0	=
Plate Radius	45.0	=
Offset	105.0	= 75 mm + Side Tube Radius
L	600.0	= Length / 2
Fin Radius	46.0	=
Fin Diameter	92.0	= Fin Radius * 2
CTP	88	= if(Fin Diameter = 73 mm, 88, if(Fin Diamete

Family Types: New..., Rename..., Delete

Parameters: Add..., Modify..., Remove

OK Cancel Apply Help

Figure A.09
 Type – K42-92-10-2HR
 Family Parameter Reference

10. Type - K48-98-10-2HE

Family Types

Name: K48-98-10-2HE

Parameter	Value	Formula
Graphics		
Fins	<input checked="" type="checkbox"/>	=
2HF	<input type="checkbox"/>	=
2HR	<input type="checkbox"/>	=
2HE	<input checked="" type="checkbox"/>	=
Materials and Finishes		
Tube	RAL 9016	=
Socket	RAL 9016	=
Plate	RAL 9016	=
Fin Pitch	RAL 9016 F	=
Dimensions		
Length	1200.0	=
Height	125.0	=
Centre Line Distance	120.0	=
Identity Data		
URL	http://www.meinertz.com	=
Model	K48-98-10-2HE	=
Manufacturer	Meinertz	"Meinertz"
Keynote	K48-98-10-2HE	=
GoGetNo	6971	= 6971
Type Comments		=
Description		=
Assembly Code		=
Cost		=
Energy Analysis		
Thermal Performance	98.400000	= CTP * Length / 1000 mm
Other		
Welded Side Thick	48.0	= Side Tube Radius + Socket Thick
Tube Radius	24.2	=
Socket Thick	10.0	=
Socket Radius	10.0	=
Socket Height	65.0	=
Side Tube Radius	38.0	=
R	60.0	= Centre Line Distance / 2
Plated Thick	10.0	=
Plate Radius	50.0	=
Offset	113.0	= 75 mm + Side Tube Radius
L	600.0	= Length / 2
Fin Radius	49.0	=
Fin Diameter	98.0	= Fin Radius * 2
CTP	82	= if (Fin Diameter = 73 mm, 88, if (Fin Diamete

Family Types: New..., Rename..., Delete

Parameters: Add..., Modify..., Remove

OK Cancel Apply Help

Figure A.10
 Type - K48-98-10-2HE
 Family Parameter Reference

11. Type - K48-98-10-2HF

Name: K48-98-10-2HF

Parameter	Value	Formula
Graphics		
Fins	<input checked="" type="checkbox"/>	=
2HF	<input checked="" type="checkbox"/>	=
2HR	<input type="checkbox"/>	=
2HE	<input type="checkbox"/>	=
Materials and Finishes		
Tube	RAL 9016	=
Socket	RAL 9016	=
Plate	RAL 9016	=
Fin Pitch	RAL 9016 F	=
Dimensions		
Length	1200.0	=
Height	125.0	=
Centre Line Distance	120.0	=
Identity Data		
URL	http://www.meinertz.com	=
Model	K48-98-10-2HF	=
Manufacturer	Meinertz	= "Meinertz"
Keynote	K48-98-10-2HF	=
GoGetNo	6971	= 6971
Type Comments		=
Description		=
Assembly Code		=
Cost		=
Energy Analysis		
Thermal Performance	98.400000	= CTP * Length / 1000 mm
Other		
Welded Side Thick	48.0	= Side Tube Radius + Socket Thick
Tube Radius	24.2	=
Socket Thick	10.0	=
Socket Radius	10.0	=
Socket Height	65.0	=
Side Tube Radius	38.0	=
R	60.0	= Centre Line Distance / 2
Plated Thick	10.0	=
Plate Radius	50.0	=
Offset	113.0	= 75 mm + Side Tube Radius
L	600.0	= Length / 2
Fin Radius	49.0	=
Fin Diameter	98.0	= Fin Radius * 2
CTP	82	= if(Fin Diameter = 73 mm, 88, if(Fin Diamete

Family Types: New..., Rename..., Delete

Parameters: Add..., Modify..., Remove

OK Cancel Apply Help

Figure A.11
Type - K48-98-10-2HF
Family Parameter Reference

12. Type - K48-98-10-2HR

Family Types

Name: K48-98-10-2HR

Parameter	Value	Formula
Graphics		
Fins	<input checked="" type="checkbox"/>	=
2HF	<input type="checkbox"/>	=
2HR	<input checked="" type="checkbox"/>	=
2HE	<input type="checkbox"/>	=
Materials and Finishes		
Tube	RAL 9016	=
Socket	RAL 9016	=
Plate	RAL 9016	=
Fin Pitch	RAL 9016 F	=
Dimensions		
Length	1200.0	=
Height	125.0	=
Centre Line Distance	120.0	=
Identity Data		
URL	http://www.meinertz.com	=
Model	K48-98-10-2HR	=
Manufacturer	Meinertz	= "Meinertz"
Keynote	K48-98-10-2HR	=
GoGetNo	6971	= 6971
Type Comments		=
Description		=
Assembly Code		=
Cost		=
Energy Analysis		
Thermal Performance	98.400000	= CTP * Length / 1000 mm
Other		
Welded Side Thick	48.0	= Side Tube Radius + Socket Thick
Tube Radius	24.2	=
Socket Thick	10.0	=
Socket Radius	10.0	=
Socket Height	65.0	=
Side Tube Radius	38.0	=
R	60.0	= Centre Line Distance / 2
Plated Thick	10.0	=
Plate Radius	50.0	=
Offset	113.0	= 75 mm + Side Tube Radius
L	600.0	= Length / 2
Fin Radius	49.0	=
Fin Diameter	98.0	= Fin Radius * 2
CTP	82	= if (Fin Diameter = 73 mm, 88, if (Fin Diamete

Family Types: New..., Rename..., Delete

Parameters: Add..., Modify..., Remove

OK Cancel Apply Help

Figure A.12
Type - K48-98-10-2HR
Family Parameter Reference

13. Type - K60-110-10-2HE

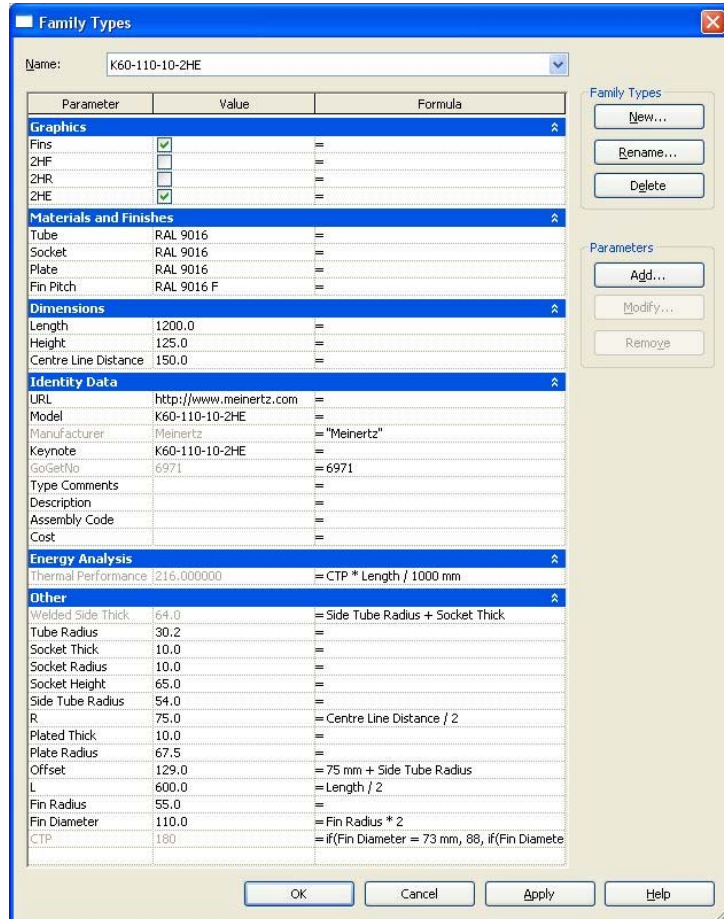


Figure A.13
Type – K60-101-10-2HE
Family Parameter Reference

14. Type - K60-110-10-2HF

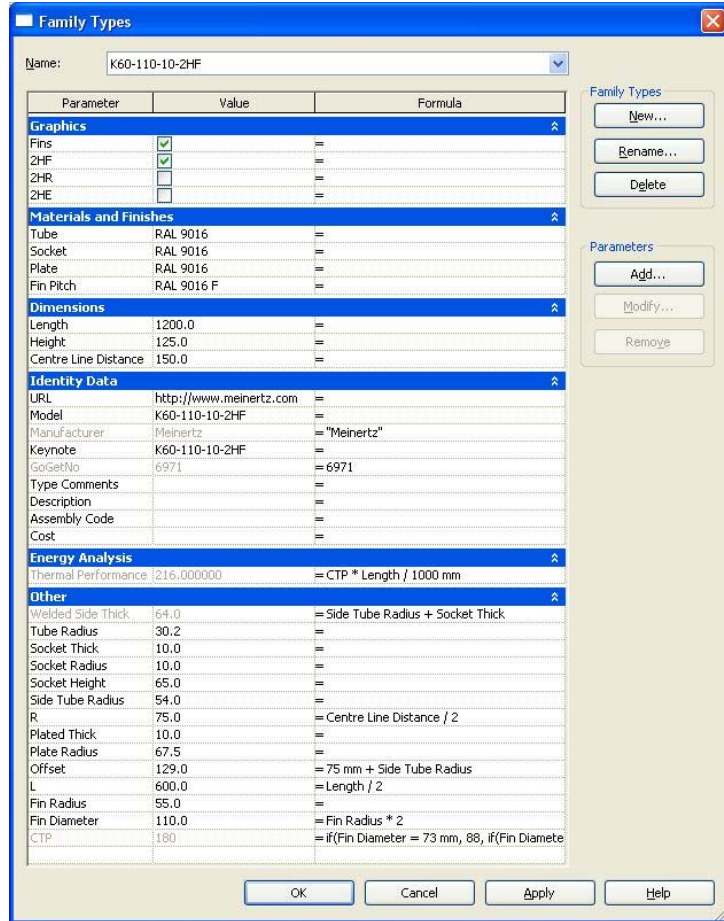


Figure A.14
Type – K60-101-10-2HF
Family Parameter Reference

15. Type - K60-110-10-2HR

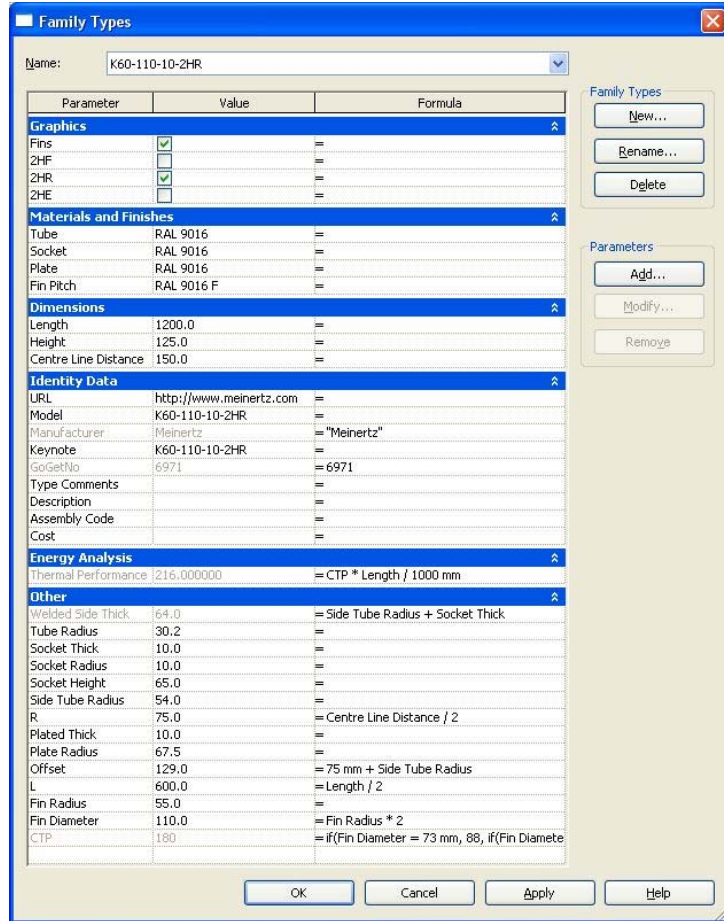


Figure A.15
Type – K60-101-10-2HR
Family Parameter Reference

16. Type - K60-123-12-2HE

Family Types

Name: K60-123-12-2HE

Parameter	Value	Formula
Graphics		
Fins	<input checked="" type="checkbox"/>	=
2HF	<input type="checkbox"/>	=
2HR	<input type="checkbox"/>	=
2HE	<input checked="" type="checkbox"/>	=
Materials and Finishes		
Tube	RAL 9016	=
Socket	RAL 9016	=
Plate	RAL 9016	=
Fin Pitch	RAL 9016 F	=
Dimensions		
Length	1200.0	=
Height	125.0	=
Centre Line Distance	150.0	=
Identity Data		
URL	http://www.meinertz.com	=
Model	K60-123-12-2HE	=
Manufacturer	Meinertz	"Meinertz"
Keynote	K60-123-12-2HE	=
GoGetNo	6971	= 6971
Type Comments		
Description		=
Assembly Code		=
Cost		=
Energy Analysis		
Thermal Performance	132.000000	= CTP * Length / 1000 mm
Other		
Welded Side Thick	64.0	= Side Tube Radius + Socket Thick
Tube Radius	30.2	=
Socket Thick	10.0	=
Socket Radius	10.0	=
Socket Height	65.0	=
Side Tube Radius	54.0	=
R	75.0	= Centre Line Distance / 2
Plated Thick	10.0	=
Plate Radius	67.5	=
Offset	129.0	= 75 mm + Side Tube Radius
L	600.0	= Length / 2
Fin Radius	61.5	=
Fin Diameter	123.0	= Fin Radius * 2
CTP	110	= if(Fin Diameter = 73 mm, 88, if(Fin Diamete

Family Types: New..., Rename..., Delete

Parameters: Add..., Modify..., Remove

OK Cancel Apply Help

Figure A.16
Type - K60-123-12-2HE
Family Parameter Reference

17. Type - K60-123-12-2HF

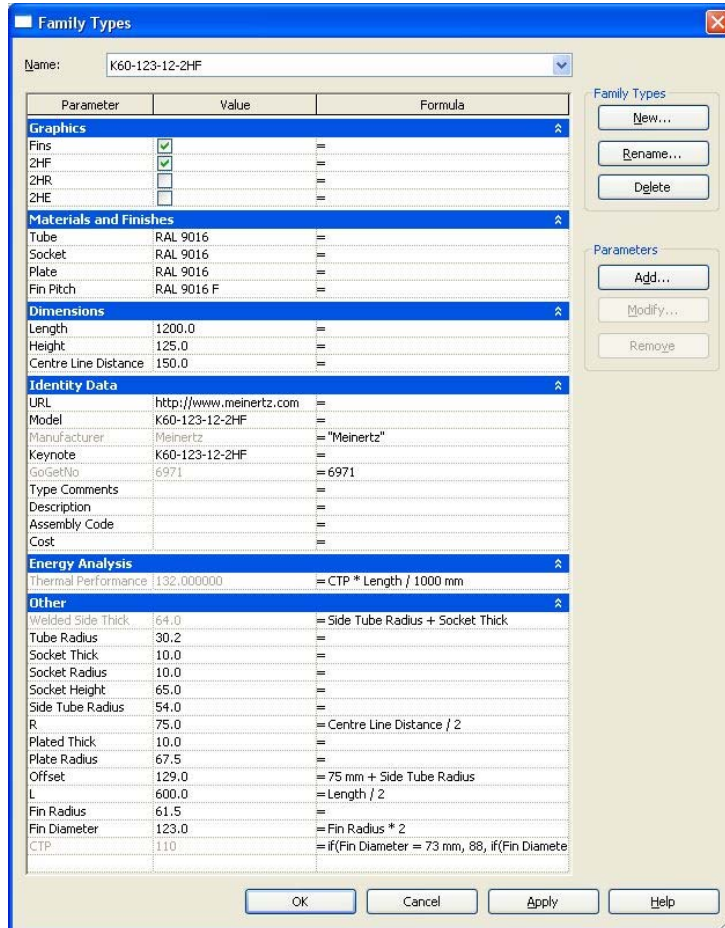


Figure A.17
Type - K60-123-12-2HF
Family Parameter Reference

18. Type - K60-123-12-2HR

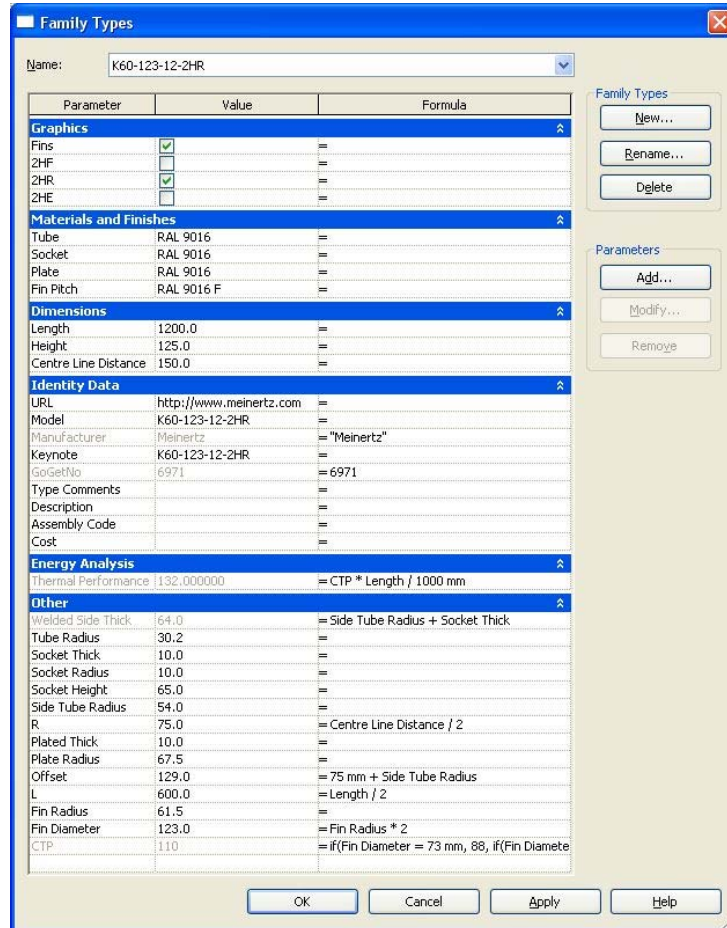


Figure A.18
Type - K60-123-12-2HR
Family Parameter Reference

19. Type - K76-139-12-2HE

Family Types

Name: K76-139-12-2HE

Parameter	Value	Formula
Graphics		
Fins	<input checked="" type="checkbox"/>	=
2HF	<input type="checkbox"/>	=
2HR	<input type="checkbox"/>	=
2HE	<input checked="" type="checkbox"/>	=
Materials and Finishes		
Tube	RAL 9016	=
Socket	RAL 9016	=
Plate	RAL 9016	=
Fin Pitch	RAL 9016 F	=
Dimensions		
Length	1200.0	=
Height	125.0	=
Centre Line Distance	190.0	=
Identity Data		
URL	http://www.meinertz.com	=
Model	K76-139-12-2HE	=
Manufacturer	Meinertz	"Meinertz"
Keynote	K76-139-12-2HE	=
GoGetNo	6971	= 6971
Type Comments		=
Description		=
Assembly Code		=
Cost		=
Energy Analysis		
Thermal Performance	159.600000	= CTP * Length / 1000 mm
Other		
Welded Side Thick	67.0	= Side Tube Radius + Socket Thick
Tube Radius	38.5	=
Socket Thick	10.0	=
Socket Radius	10.0	=
Socket Height	65.0	=
Side Tube Radius	57.0	=
R	95.0	= Centre Line Distance / 2
Plated Thick	10.0	=
Plate Radius	77.5	=
Offset	132.0	= 75 mm + Side Tube Radius
L	600.0	= Length / 2
Fin Radius	69.5	=
Fin Diameter	139.0	= Fin Radius * 2
CTP	133	= if(Fin Diameter = 73 mm, 88, if(Fin Diamete

Family Types: New..., Rename..., Delete

Parameters: Add..., Modify..., Remove

OK Cancel Apply Help

Figure A.19
Type – K76-139-12-2HE
Family Parameter Reference

20. Type - K76-139-12-2HF

Family Types

Name: K76-139-12-2HF

Parameter	Value	Formula
Graphics		
Fins	<input checked="" type="checkbox"/>	=
2HF	<input checked="" type="checkbox"/>	=
2HR	<input type="checkbox"/>	=
2HE	<input type="checkbox"/>	=
Materials and Finishes		
Tube	RAL 9016	=
Socket	RAL 9016	=
Plate	RAL 9016	=
Fin Pitch	RAL 9016 F	=
Dimensions		
Length	1200.0	=
Height	125.0	=
Centre Line Distance	190.0	=
Identity Data		
URL	http://www.meinertz.com	=
Model	K76-139-12-2HF	=
Manufacturer	Meinertz	"Meinertz"
Keynote	K76-139-12-2HF	=
GoGetNo	6971	= 6971
Type Comments		=
Description		=
Assembly Code		=
Cost		=
Energy Analysis		
Thermal Performance	159.600000	= CTP * Length / 1000 mm
Other		
Welded Side Thick	67.0	= Side Tube Radius + Socket Thick
Tube Radius	38.5	=
Socket Thick	10.0	=
Socket Radius	10.0	=
Socket Height	65.0	=
Side Tube Radius	57.0	=
R	95.0	= Centre Line Distance / 2
Plated Thick	10.0	=
Plate Radius	77.5	=
Offset	132.0	= 75 mm + Side Tube Radius
L	600.0	= Length / 2
Fin Radius	69.5	=
Fin Diameter	139.0	= Fin Radius * 2
CTP	133	= if(Fin Diameter = 73 mm, 88, if(Fin Diamete

Family Types: New..., Rename..., Delete

Parameters: Add..., Modify..., Remove

OK Cancel Apply Help

Figure A.20
Type – K76-139-12-2HF
Family Parameter Reference

21. Type - K76-139-12-2HR

Family Types

Name: K76-139-12-2HR

Parameter	Value	Formula
Graphics		
Fins	<input checked="" type="checkbox"/>	=
2HF	<input type="checkbox"/>	=
2HR	<input checked="" type="checkbox"/>	=
2HE	<input type="checkbox"/>	=
Materials and Finishes		
Tube	RAL 9016	=
Socket	RAL 9016	=
Plate	RAL 9016	=
Fin Pitch	RAL 9016 F	=
Dimensions		
Length	1200.0	=
Height	125.0	=
Centre Line Distance	190.0	=
Identity Data		
URL	http://www.meinertz.com	=
Model	K76-139-12-2HR	=
Manufacturer	Meinertz	"Meinertz"
Keynote	K76-139-12-2HR	=
GoGetNo	6971	= 6971
Type Comments		=
Description		=
Assembly Code		=
Cost		=
Energy Analysis		
Thermal Performance	159.600000	= CTP * Length / 1000 mm
Other		
Welded Side Thick	67.0	= Side Tube Radius + Socket Thick
Tube Radius	38.5	=
Socket Thick	10.0	=
Socket Radius	11.9	=
Socket Height	65.0	=
Side Tube Radius	57.0	=
R	95.0	= Centre Line Distance / 2
Plated Thick	10.0	=
Plate Radius	77.5	=
Offset	132.0	= 75 mm + Side Tube Radius
L	600.0	= Length / 2
Fin Radius	69.5	=
Fin Diameter	139.0	= Fin Radius * 2
CTP	133	= if(Fin Diameter = 73 mm, 88, if(Fin Diamete

Family Types: New..., Rename..., Delete

Parameters: Add..., Modify..., Remove

OK Cancel Apply Help

Figure A.21
Type – K76-139-12-2HR
Family Parameter Reference

22. Type – K101-164-12-2HE

Family Types

Name: K101-164-12-2HE

Parameter	Value	Formula
Graphics		
Fins	<input checked="" type="checkbox"/>	=
2HF	<input type="checkbox"/>	=
2HR	<input type="checkbox"/>	=
2HE	<input checked="" type="checkbox"/>	=
Materials and Finishes		
Tube	RAL 9016	=
Socket	RAL 9016	=
Plate	RAL 9016	=
Fin Pitch	RAL 9016 F	=
Dimensions		
Length	1200.0	=
Height	125.0	=
Centre Line Distance	270.0	=
Identity Data		
URL	http://www.meinertz.com	=
Model	K101-164-12-2HE	=
Manufacturer	Meinertz	= "Meinertz"
Keynote	K101-164-12-2HE	=
GoGetNo	6971	= 6971
Type Comments		=
Description		=
Assembly Code		=
Cost		=
Energy Analysis		
Thermal Performance	216.000000	= CTP * Length / 1000 mm
Other		
Welded Side Thick	79.5	= Side Tube Radius + Socket Thick
Tube Radius	50.8	=
Socket Thick	10.0	=
Socket Radius	10.0	=
Socket Height	85.0	=
Side Tube Radius	69.5	=
R	135.0	= Centre Line Distance / 2
Plated Thick	10.0	=
Plate Radius	90.0	=
Offset	144.5	= 75 mm + Side Tube Radius
L	600.0	= Length / 2
Fin Radius	82.0	=
Fin Diameter	164.0	= Fin Radius * 2
CTP	180	= if (Fin Diameter = 73 mm, 88, if (Fin Diameter

Family Types: New..., Rename..., Delete

Parameters: Add..., Modify..., Remove

OK Cancel Apply Help

Figure A.22
Type – K101-164-12-2HE
Family Parameter Reference

23. Type – K101-164-12-2HF

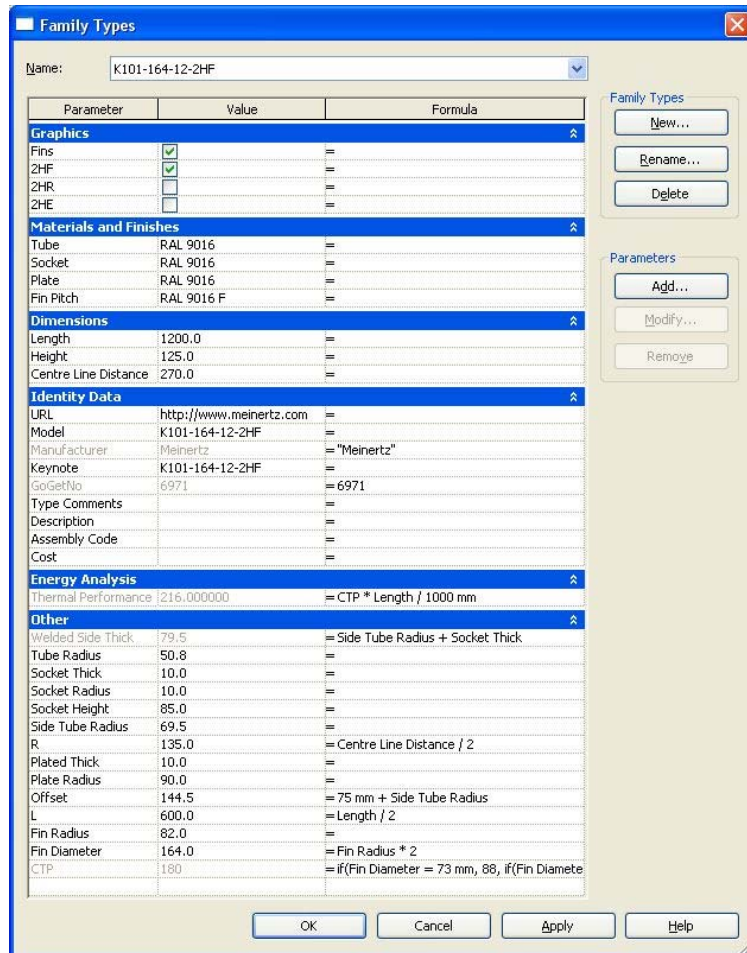


Figure A.23
 Type – K101-164-12-2HF
 Family Parameter Reference

24. Type – K101-164-12-2HR

Family Types

Name: K101-164-12-2HR

Parameter	Value	Formula
Graphics		
Fins	<input checked="" type="checkbox"/>	=
2HF	<input type="checkbox"/>	=
2HR	<input checked="" type="checkbox"/>	=
2HE	<input type="checkbox"/>	=
Materials and Finishes		
Tube	RAL 9016	=
Socket	RAL 9016	=
Plate	RAL 9016	=
Fin Pitch	RAL 9016 F	=
Dimensions		
Length	1200.0	=
Height	125.0	=
Centre Line Distance	270.0	=
Identity Data		
URL	http://www.meinertz.com	=
Model	K101-164-12-2HR	=
Manufacturer	Meinertz	= "Meinertz"
Keynote	K101-164-12-2HR	=
GoGetNo	6971	= 6971
Type Comments		=
Description		=
Assembly Code		=
Cost		=
Energy Analysis		
Thermal Performance	216.000000	= CTP * Length / 1000 mm
Other		
Welded Side Thick	79.5	= Side Tube Radius + Socket Thick
Tube Radius	50.8	=
Socket Thick	10.0	=
Socket Radius	10.0	=
Socket Height	85.0	=
Side Tube Radius	69.5	=
R	135.0	= Centre Line Distance / 2
Plated Thick	10.0	=
Plate Radius	90.0	=
Offset	144.5	= 75 mm + Side Tube Radius
L	600.0	= Length / 2
Fin Radius	82.0	=
Fin Diameter	164.0	= Fin Radius * 2
CTP	180	= if(Fin Diameter = 73 mm, 88, if(Fin Diamete

Family Types: New..., Rename..., Delete

Parameters: Add..., Modify..., Remove

OK Cancel Apply Help

Figure A.24
 Type – K101-164-12-2HR
 Family Parameter Reference

Sub Family Types Preset

1. Type - K33-73-08

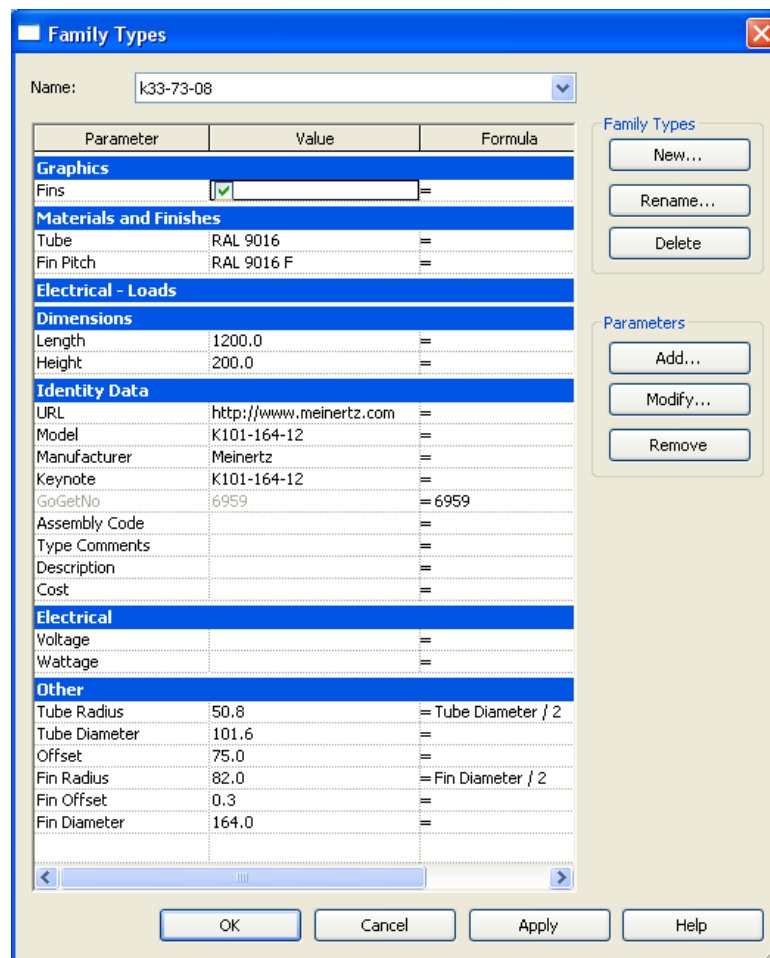


Figure A.25

Type - K33-73-08

Sub Family Parameter Reference

2. Type - K33-83-10

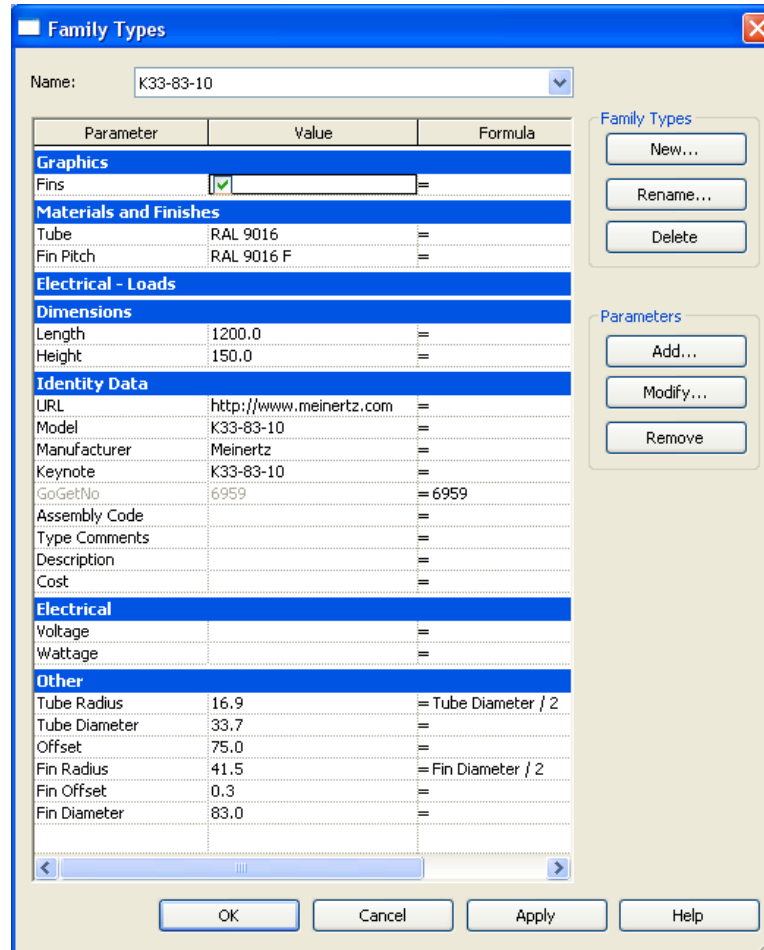


Figure A.26
Type - K33-83-08
Sub Family Parameter Reference

3. Type - K42-92-10

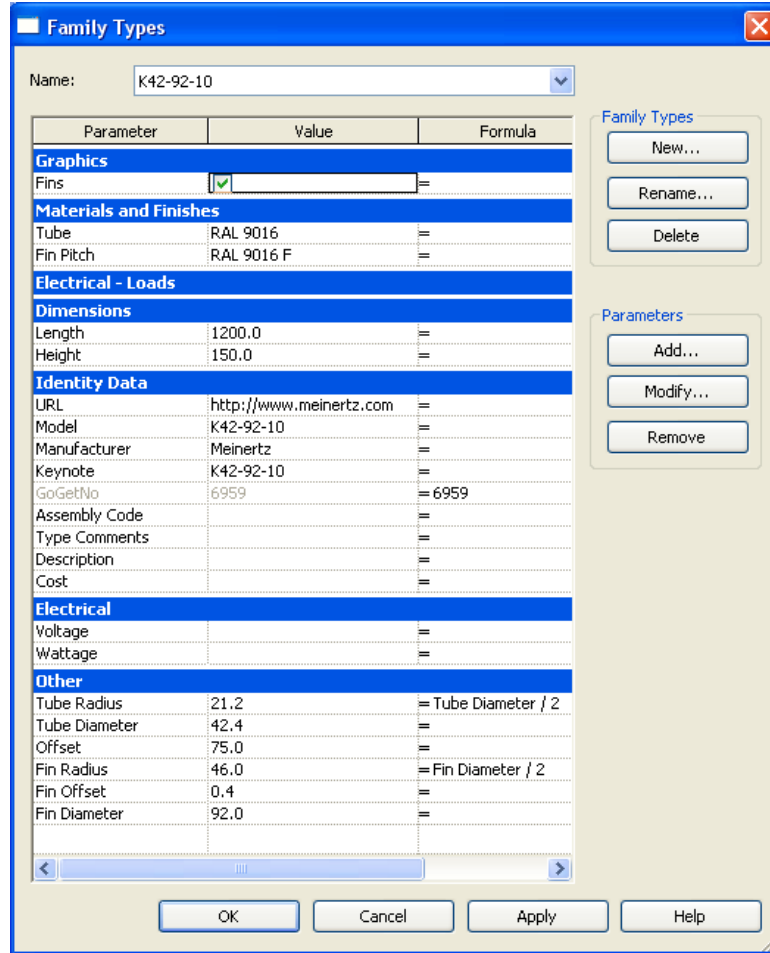


Figure A.27
 Type – K42-92-10
 Sub Family Parameter Reference

4. Type - K48-98-10

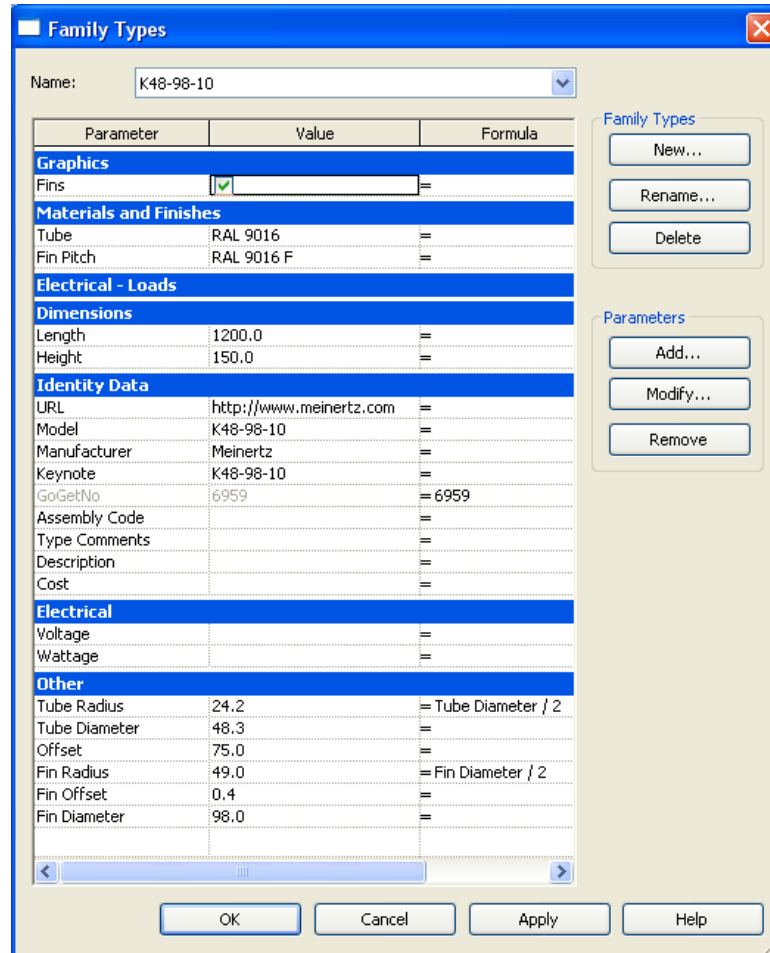


Figure A.28
 Type - K48-98-10
 Sub Family Parameter Reference

5. Type - K60-110-10

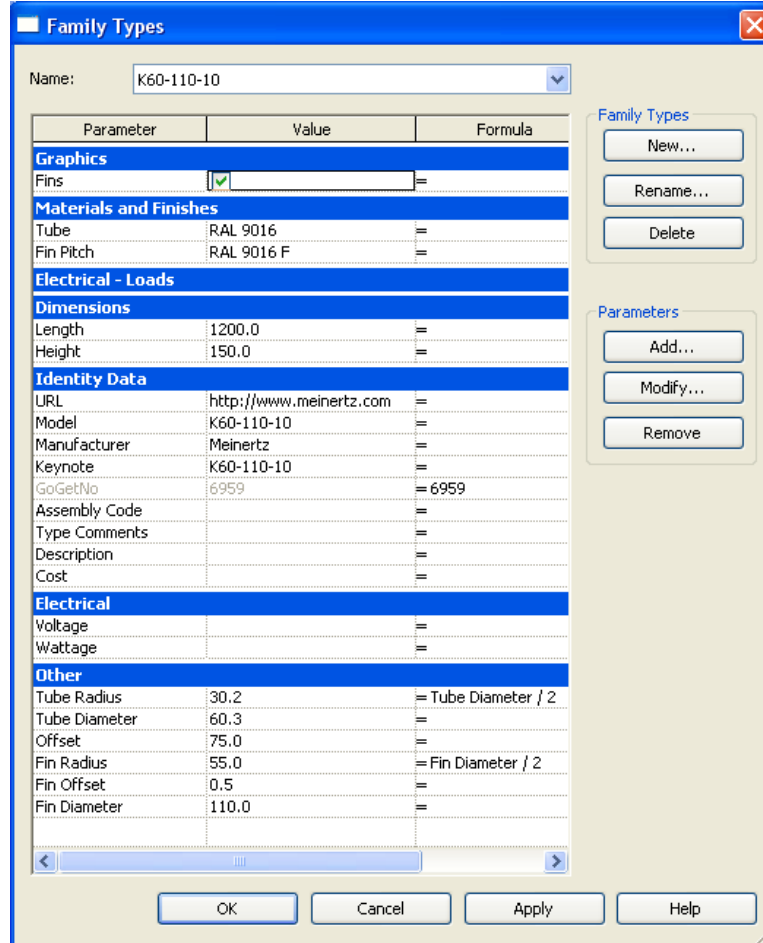


Figure A.29
 Type – K60-101-10
 Sub Family Parameter Reference

6. Type - K60-123-12

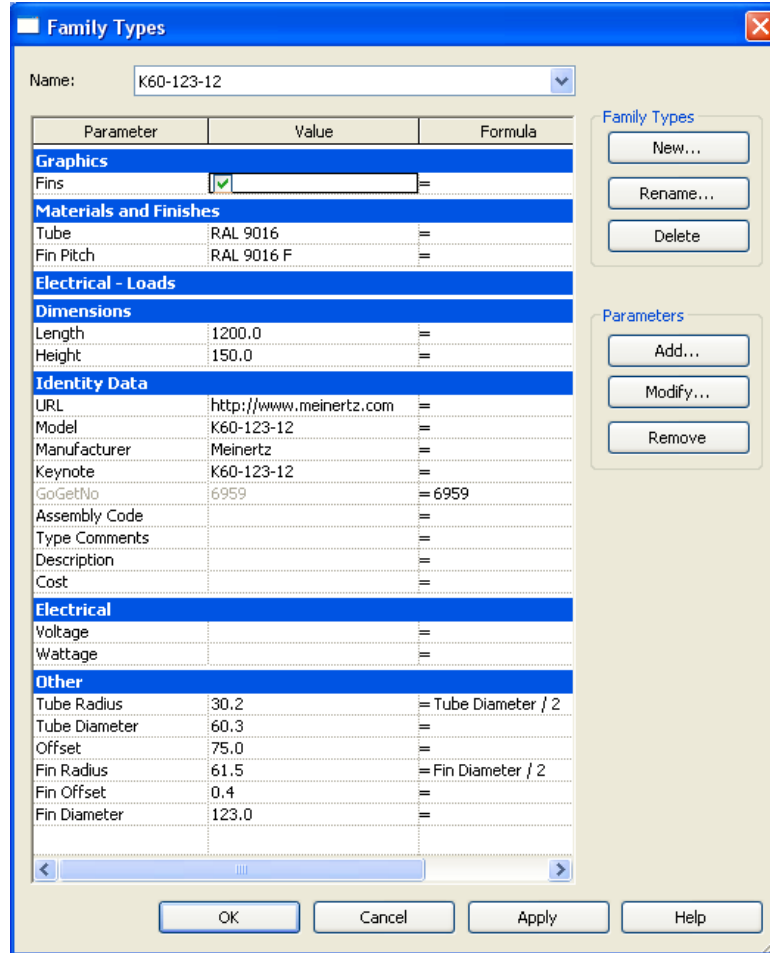


Figure A.30
Type - K60-123-10
Sub Family Parameter Reference

7. Type - K76-139-12

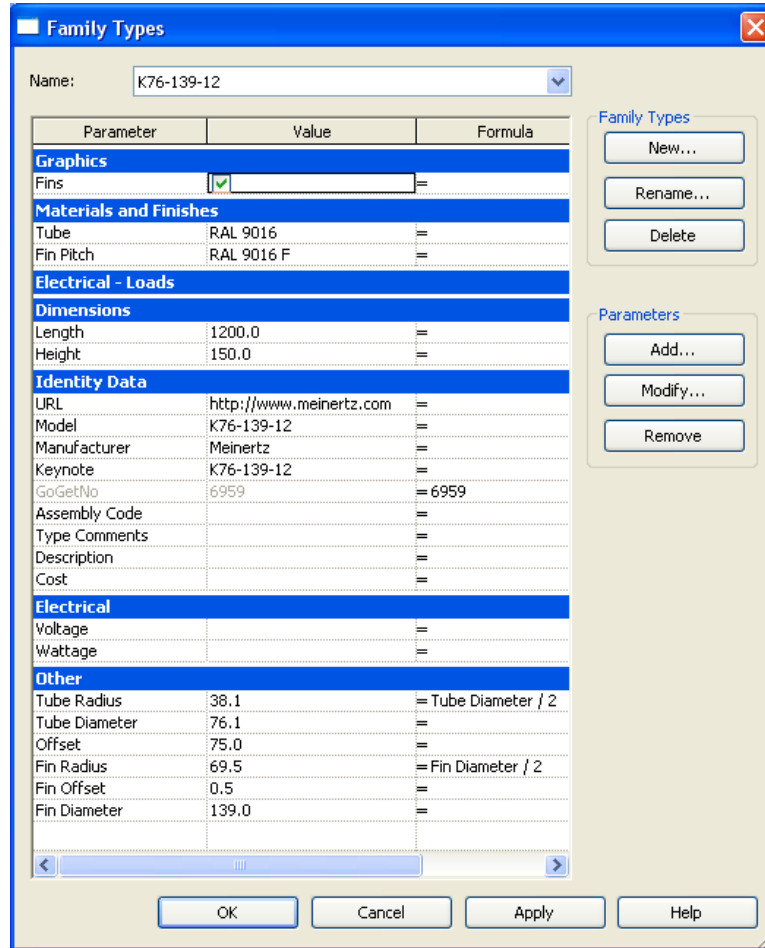


Figure A.31
Type – K76-139-12
Sub Family Parameter Reference

8. Type – K101-164-12

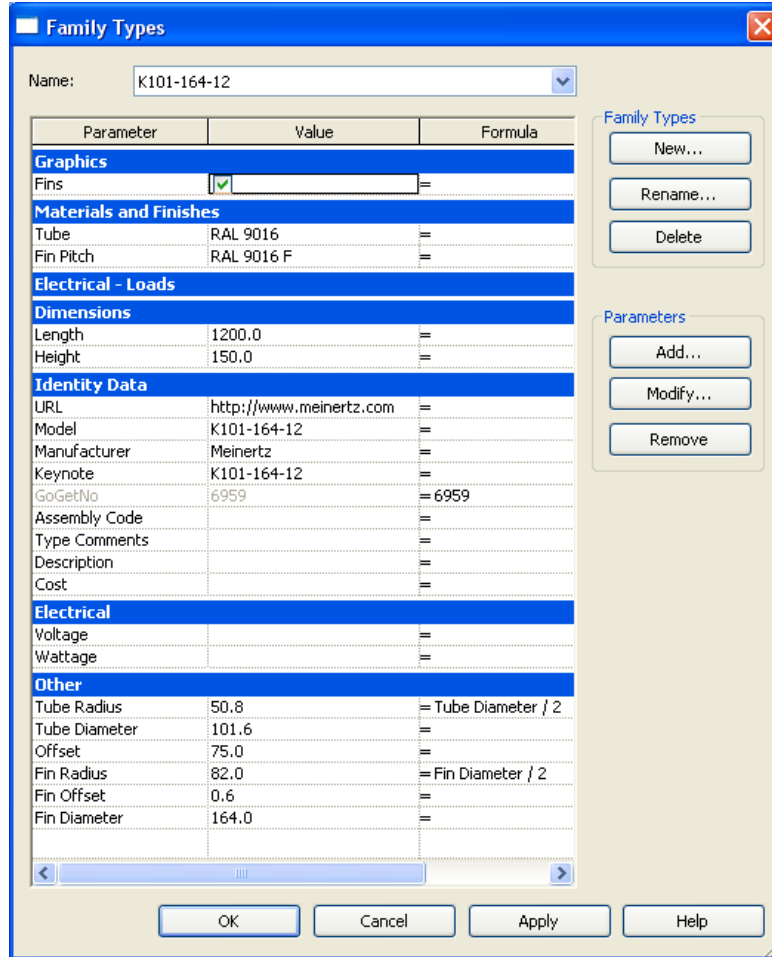


Figure A.32
Type – K101-164-12
Sub Family Parameter Reference