

Ribberør 3SE

GoGetNo : 6974

Family Types Preset

1. Type - K33-73-08

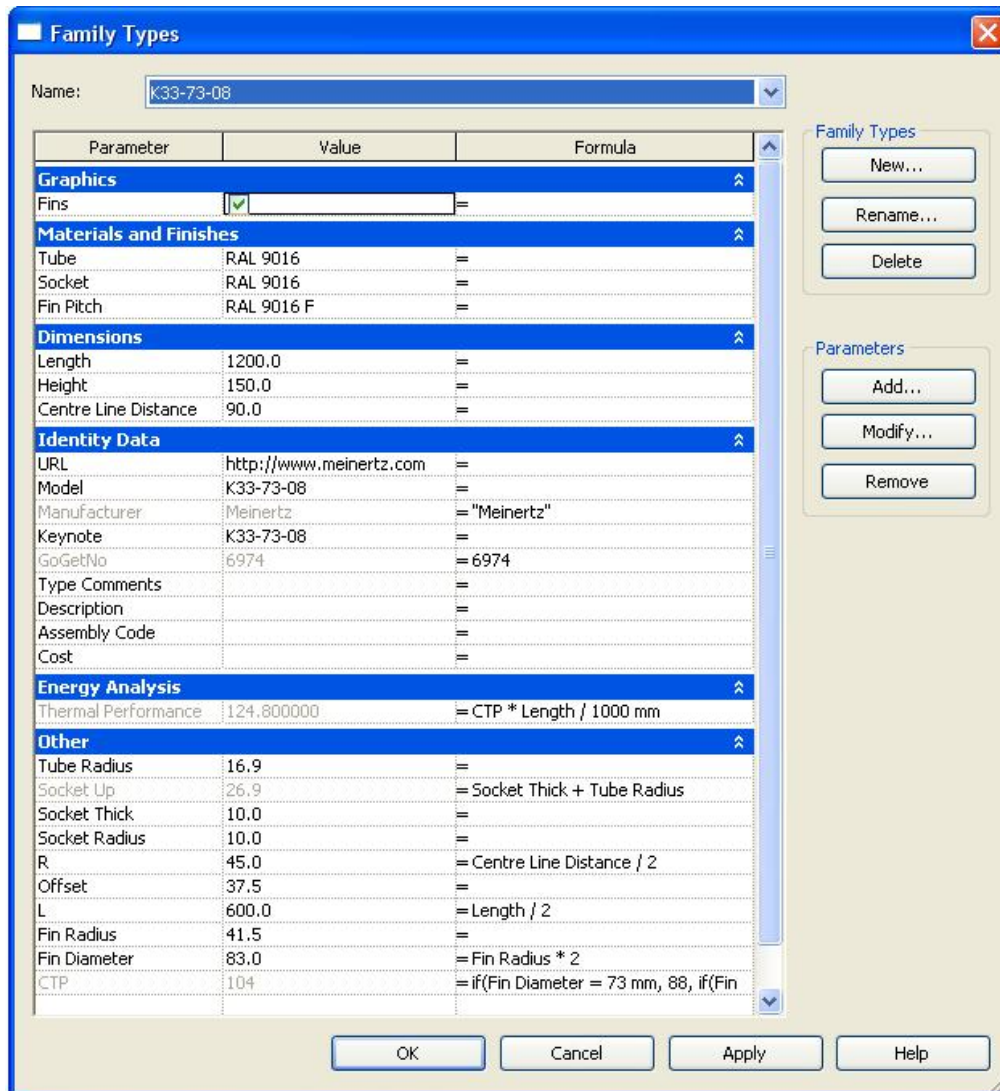


Figure A.01
 Type - K33-73-08
 Family Parameter Reference

2. Type - K33-83-10

Family Types

Name:

Parameter	Value	Formula
Graphics		
Fins	<input checked="" type="checkbox"/>	=
Materials and Finishes		
Tube	RAL 9016	=
Socket	RAL 9016	=
Fin Pitch	RAL 9016 F	=
Dimensions		
Length	1200.0	=
Height	150.0	=
Centre Line Distance	100.0	=
Identity Data		
URL	http://www.meinertz.com	=
Model	K33-83-10	=
Manufacturer	Meinertz	= "Meinertz"
Keynote	K33-83-10	=
GoGetNo	6974	= 6974
Type Comments		=
Description		=
Assembly Code		=
Cost		=
Energy Analysis		
Thermal Performance	124.800000	= CTP * Length / 1000 mm
Other		
Tube Radius	16.9	=
Socket Up	26.9	= Socket Thick + Tube Radius
Socket Thick	10.0	=
Socket Radius	10.0	=
R	50.0	= Centre Line Distance / 2
Offset	37.5	=
L	600.0	= Length / 2
Fin Radius	41.5	=
Fin Diameter	83.0	= Fin Radius * 2
CTP	104	= if(Fin Diameter = 73 mm, 88, if(Fin

Family Types

New...
Rename...
Delete

Parameters

Add...
Modify...
Remove

OK Cancel Apply Help

Figure A.02
Type - K33-83-08
Family Parameter Reference

3. Type - K42-92-10

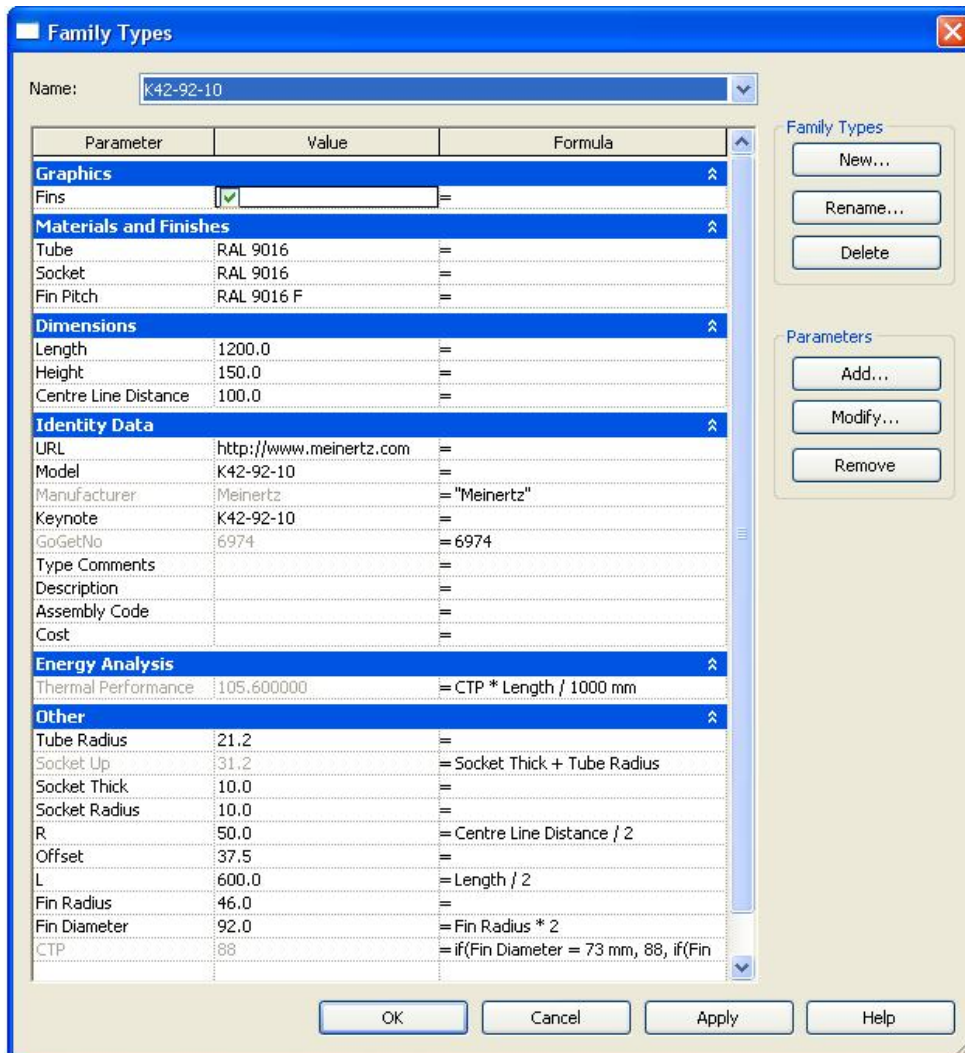


Figure A.03
Type – K42-92-10
Family Parameter Reference

4. Type - K48-98-10

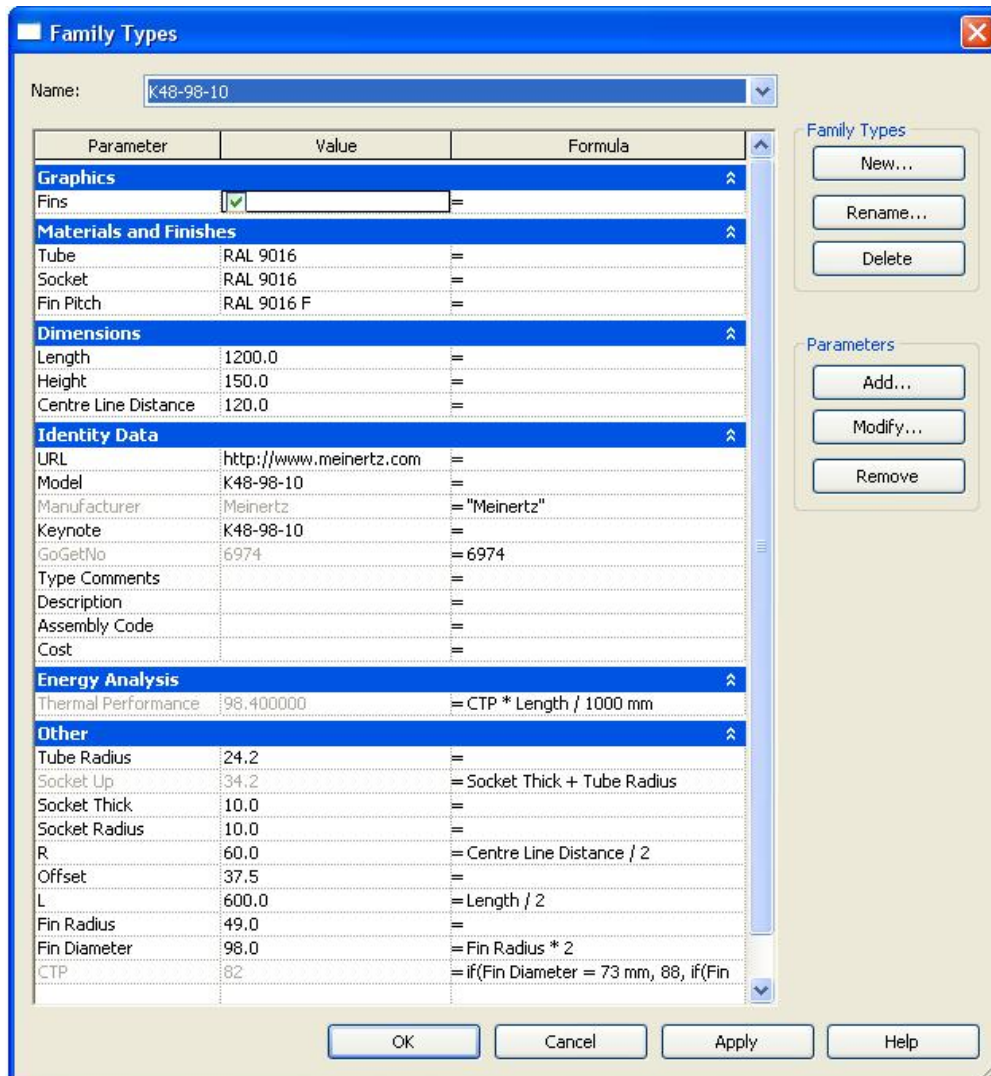


Figure A.04
Type - K48-98-10
Family Parameter Reference

7. Type - K76-139-12

Family Types

Name:

Parameter	Value	Formula
Graphics		
Fins	<input checked="" type="checkbox"/>	=
Materials and Finishes		
Tube	RAL 9016	=
Socket	RAL 9016	=
Fin Pitch	RAL 9016 F	=
Dimensions		
Length	1200.0	=
Height	150.0	=
Centre Line Distance	190.0	=
Identity Data		
URL	http://www.meinertz.com	=
Model	K76-139-12	=
Manufacturer	Meinertz	= "Meinertz"
Keynote	K76-139-12	=
GoGetNo	6974	= 6974
Type Comments		=
Description		=
Assembly Code		=
Cost		=
Energy Analysis		
Thermal Performance	159.600000	= CTP * Length / 1000 mm
Other		
Tube Radius	38.5	=
Socket Up	48.5	= Socket Thick + Tube Radius
Socket Thick	10.0	=
Socket Radius	10.0	=
R	95.0	= Centre Line Distance / 2
Offset	37.5	=
L	600.0	= Length / 2
Fin Radius	69.5	=
Fin Diameter	139.0	= Fin Radius * 2
CTP	133	= if(Fin Diameter = 73 mm, 88, if(Fin

Family Types

New...

Rename...

Delete

Parameters

Add...

Modify...

Remove

OK Cancel Apply Help

Figure A.07
 Type – K76-139-12
 Family Parameter Reference

8. Type – K101-164-12

Family Types

Name:

Parameter	Value	Formula
Graphics		
Fins	<input checked="" type="checkbox"/>	=
Materials and Finishes		
Tube	RAL 9016	=
Socket	RAL 9016	=
Fin Pitch	RAL 9016 F	=
Dimensions		
Length	1200.0	=
Height	150.0	=
Centre Line Distance	270.0	=
Identity Data		
URL	http://www.meinertz.com	=
Model	K101-164-12	=
Manufacturer	Meinertz	= "Meinertz"
Keynote	K101-164-12	=
GoGetNo	6974	= 6974
Type Comments		=
Description		=
Assembly Code		=
Cost		=
Energy Analysis		
Thermal Performance	216.000000	= CTP * Length / 1000 mm
Other		
Tube Radius	50.8	=
Socket Up	60.8	= Socket Thick + Tube Radius
Socket Thick	10.0	=
Socket Radius	10.0	=
R	135.0	= Centre Line Distance / 2
Offset	37.5	=
L	600.0	= Length / 2
Fin Radius	82.0	=
Fin Diameter	164.0	= Fin Radius * 2
CTP	180	= if(Fin Diameter = 73 mm, 88, if(Fin

Family Types

New...
Rename...
Delete

Parameters

Add...
Modify...
Remove

OK Cancel Apply Help

Figure A.08
Type – K101-164-12
Family Parameter Reference

Sub Family Types Preset

1. Type - K33-73-08

Name: k33-73-08

Parameter	Value	Formula
Graphics		
Fins	<input checked="" type="checkbox"/>	=
Materials and Finishes		
Tube	RAL 9016	=
Fin Pitch	RAL 9016 F	=
Electrical - Loads		
Dimensions		
Length	1200.0	=
Height	200.0	=
Identity Data		
URL	http://www.meinertz.com	=
Model	K101-164-12	=
Manufacturer	Meinertz	=
Keynote	K101-164-12	=
GoGetNo	6959	= 6959
Assembly Code		=
Type Comments		=
Description		=
Cost		=
Electrical		
Voltage		=
Wattage		=
Other		
Tube Radius	50.8	= Tube Diameter / 2
Tube Diameter	101.6	=
Offset	75.0	=
Fin Radius	82.0	= Fin Diameter / 2
Fin Offset	0.3	=
Fin Diameter	164.0	=

Family Types

New...
Rename...
Delete

Parameters

Add...
Modify...
Remove

OK Cancel Apply Help

Figure A.09

Type - K33-73-08

Sub Family Parameter Reference

2. Type - K33-83-10

Name: K33-83-10

Parameter	Value	Formula
Graphics		
Fins	<input checked="" type="checkbox"/>	=
Materials and Finishes		
Tube	RAL 9016	=
Fin Pitch	RAL 9016 F	=
Electrical - Loads		
Dimensions		
Length	1200.0	=
Height	150.0	=
Identity Data		
URL	http://www.meinertz.com	=
Model	K33-83-10	=
Manufacturer	Meinertz	=
Keynote	K33-83-10	=
GoGetNo	6959	= 6959
Assembly Code		=
Type Comments		=
Description		=
Cost		=
Electrical		
Voltage		=
Wattage		=
Other		
Tube Radius	16.9	= Tube Diameter / 2
Tube Diameter	33.7	=
Offset	75.0	=
Fin Radius	41.5	= Fin Diameter / 2
Fin Offset	0.3	=
Fin Diameter	83.0	=

Family Types

New...
Rename...
Delete

Parameters

Add...
Modify...
Remove

OK Cancel Apply Help

Figure A.10

Type - K33-83-08
Sub Family Parameter Reference

3. Type - K42-92-10

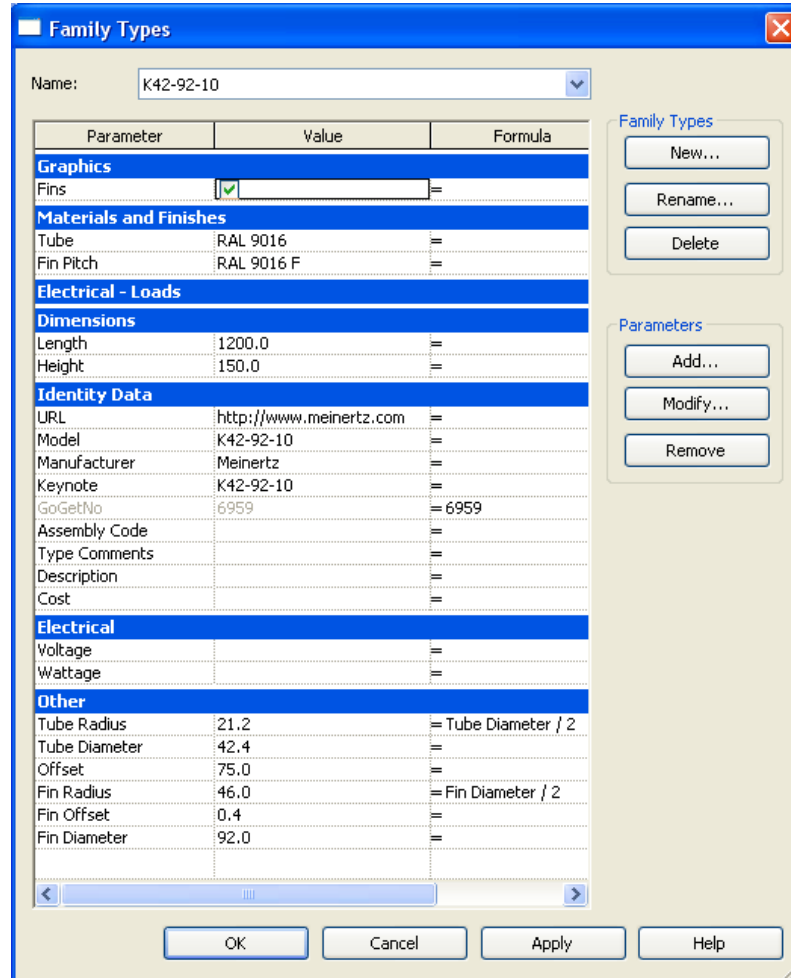


Figure A.11

Type – K42-92-10
Sub Family Parameter Reference

4. Type - K48-98-10

Family Types

Name: K48-98-10

Parameter	Value	Formula
Graphics		
Fins	<input checked="" type="checkbox"/>	=
Materials and Finishes		
Tube	RAL 9016	=
Fin Pitch	RAL 9016 F	=
Electrical - Loads		
Dimensions		
Length	1200.0	=
Height	150.0	=
Identity Data		
URL	http://www.meinertz.com	=
Model	K48-98-10	=
Manufacturer	Meinertz	=
Keynote	K48-98-10	=
GoGetNo	6959	= 6959
Assembly Code		=
Type Comments		=
Description		=
Cost		=
Electrical		
Voltage		=
Wattage		=
Other		
Tube Radius	24.2	= Tube Diameter / 2
Tube Diameter	48.3	=
Offset	75.0	=
Fin Radius	49.0	= Fin Diameter / 2
Fin Offset	0.4	=
Fin Diameter	98.0	=

Family Types

New...
Rename...
Delete

Parameters

Add...
Modify...
Remove

OK Cancel Apply Help

Figure A.12

Type - K48-98-10
Sub Family Parameter Reference

5. Type - K60-110-10

Family Types

Name: K60-110-10

Parameter	Value	Formula
Graphics		
Fins	<input checked="" type="checkbox"/>	=
Materials and Finishes		
Tube	RAL 9016	=
Fin Pitch	RAL 9016 F	=
Electrical - Loads		
Dimensions		
Length	1200.0	=
Height	150.0	=
Identity Data		
URL	http://www.meinertz.com	=
Model	K60-110-10	=
Manufacturer	Meinertz	=
Keynote	K60-110-10	=
GoGetNo	6959	= 6959
Assembly Code		=
Type Comments		=
Description		=
Cost		=
Electrical		
Voltage		=
Wattage		=
Other		
Tube Radius	30.2	= Tube Diameter / 2
Tube Diameter	60.3	=
Offset	75.0	=
Fin Radius	55.0	= Fin Diameter / 2
Fin Offset	0.5	=
Fin Diameter	110.0	=

Family Types

New...
Rename...
Delete

Parameters

Add...
Modify...
Remove

OK Cancel Apply Help

Figure A.13

Type – K60-101-10
Sub Family Parameter Reference

6. Type - K60-123-12

Family Types

Name: K60-123-12

Parameter	Value	Formula
Graphics		
Fins	<input checked="" type="checkbox"/>	=
Materials and Finishes		
Tube	RAL 9016	=
Fin Pitch	RAL 9016 F	=
Electrical - Loads		
Dimensions		
Length	1200.0	=
Height	150.0	=
Identity Data		
URL	http://www.meinertz.com	=
Model	K60-123-12	=
Manufacturer	Meinertz	=
Keynote	K60-123-12	=
GoGetNo	6959	= 6959
Assembly Code		=
Type Comments		=
Description		=
Cost		=
Electrical		
Voltage		=
Wattage		=
Other		
Tube Radius	30.2	= Tube Diameter / 2
Tube Diameter	60.3	=
Offset	75.0	=
Fin Radius	61.5	= Fin Diameter / 2
Fin Offset	0.4	=
Fin Diameter	123.0	=

Family Types

New...
Rename...
Delete

Parameters

Add...
Modify...
Remove

OK Cancel Apply Help

Figure A.14

Type - K60-123-10
Sub Family Parameter Reference

7. Type - K76-139-12

Family Types

Name: K76-139-12

Parameter	Value	Formula
Graphics		
Fins	<input checked="" type="checkbox"/>	=
Materials and Finishes		
Tube	RAL 9016	=
Fin Pitch	RAL 9016 F	=
Electrical - Loads		
Dimensions		
Length	1200.0	=
Height	150.0	=
Identity Data		
URL	http://www.meinertz.com	=
Model	K76-139-12	=
Manufacturer	Meinertz	=
Keynote	K76-139-12	=
GoGetNo	6959	= 6959
Assembly Code		=
Type Comments		=
Description		=
Cost		=
Electrical		
Voltage		=
Wattage		=
Other		
Tube Radius	38.1	= Tube Diameter / 2
Tube Diameter	76.1	=
Offset	75.0	=
Fin Radius	69.5	= Fin Diameter / 2
Fin Offset	0.5	=
Fin Diameter	139.0	=

Family Types

New...
Rename...
Delete

Parameters

Add...
Modify...
Remove

OK Cancel Apply Help

Figure A.15

Type – K76-139-12
Sub Family Parameter Reference

8. Type – K101-164-12

Family Types

Name: K101-164-12

Parameter	Value	Formula
Graphics		
Fins	<input checked="" type="checkbox"/>	=
Materials and Finishes		
Tube	RAL 9016	=
Fin Pitch	RAL 9016 F	=
Electrical - Loads		
Dimensions		
Length	1200.0	=
Height	150.0	=
Identity Data		
URL	http://www.meinertz.com	=
Model	K101-164-12	=
Manufacturer	Meinertz	=
Keynote	K101-164-12	=
GoGetNo	6959	= 6959
Assembly Code		=
Type Comments		=
Description		=
Cost		=
Electrical		
Voltage		=
Wattage		=
Other		
Tube Radius	50.8	= Tube Diameter / 2
Tube Diameter	101.6	=
Offset	75.0	=
Fin Radius	82.0	= Fin Diameter / 2
Fin Offset	0.6	=
Fin Diameter	164.0	=

Family Types

New...
Rename...
Delete

Parameters

Add...
Modify...
Remove

OK Cancel Apply Help

Figure A.16

Type – K101-164-12
Sub Family Parameter Reference