

Ribberør LRO

GoGetNo : 6964

Family Types Preset

1. Type - K33-73-08 LFL

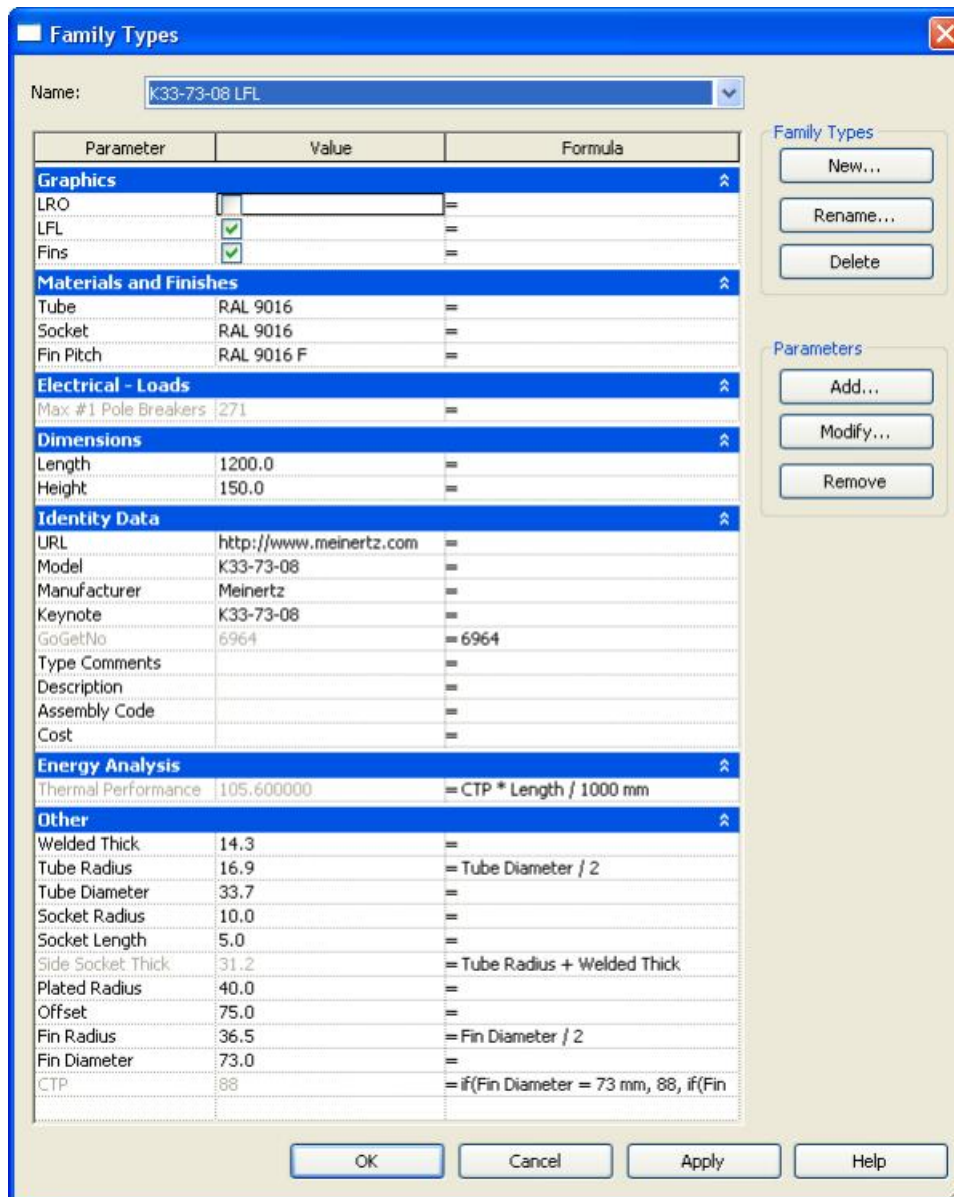


Figure A.01

Type - K33-73-08 LFL
Family Parameter Reference

2. Type - K33-73-08 LRO

Family Types

Name:

Parameter	Value	Formula
Graphics		
LRO	<input checked="" type="checkbox"/>	=
LFL	<input type="checkbox"/>	=
Fins	<input checked="" type="checkbox"/>	=
Materials and Finishes		
Tube	RAL 9016	=
Socket	RAL 9016	=
Fin Pitch	RAL 9016 F	=
Electrical - Loads		
Max #1 Pole Breakers	271	=
Dimensions		
Length	1200.0	=
Height	150.0	=
Identity Data		
URL	http://www.meinertz.com	=
Model	K33-73-08	=
Manufacturer	Meinertz	=
Keynote	K33-73-08	=
GoGetNo	6964	= 6964
Type Comments		=
Description		=
Assembly Code		=
Cost		=
Energy Analysis		
Thermal Performance	105.600000	= CTP * Length / 1000 mm
Other		
Welded Thick	14.3	=
Tube Radius	16.9	= Tube Diameter / 2
Tube Diameter	33.7	=
Socket Radius	10.0	=
Socket Length	5.0	=
Side Socket Thick	31.2	= Tube Radius + Welded Thick
Plated Radius	40.0	=
Offset	75.0	=
Fin Radius	36.5	= Fin Diameter / 2
Fin Diameter	73.0	=
CTP	88	= if(Fin Diameter = 73 mm, 88, if(Fin

Family Types

New...
Rename...
Delete

Parameters

Add...
Modify...
Remove

OK Cancel Apply Help

Figure A.02
Type - K33-73-08 LRO
Family Parameter Reference

3. Type - K33-83-10 LFL

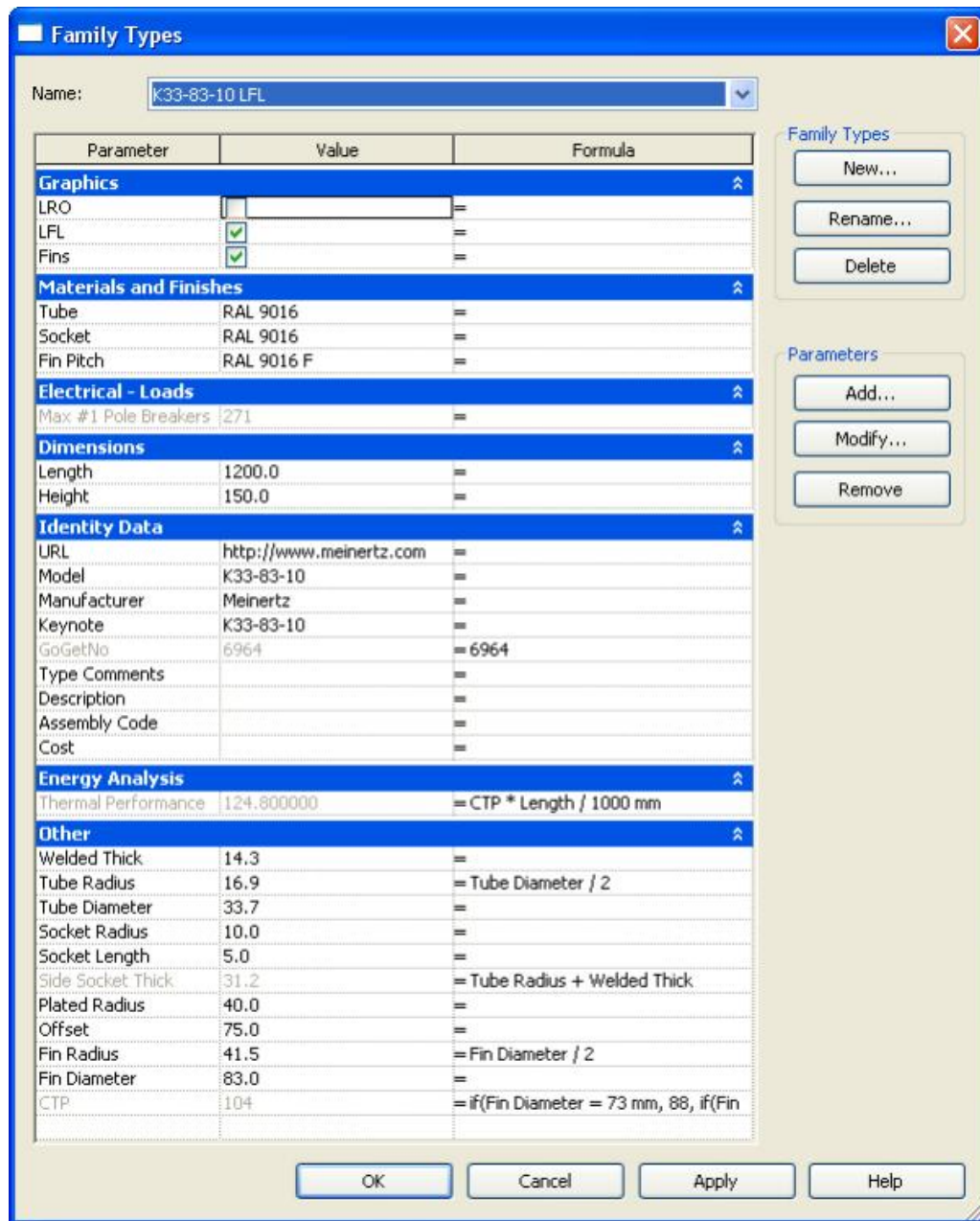


Figure A.03

Type – K33-83-10 LFL
Family Parameter Reference

4. Type - K33-83-10 LRO

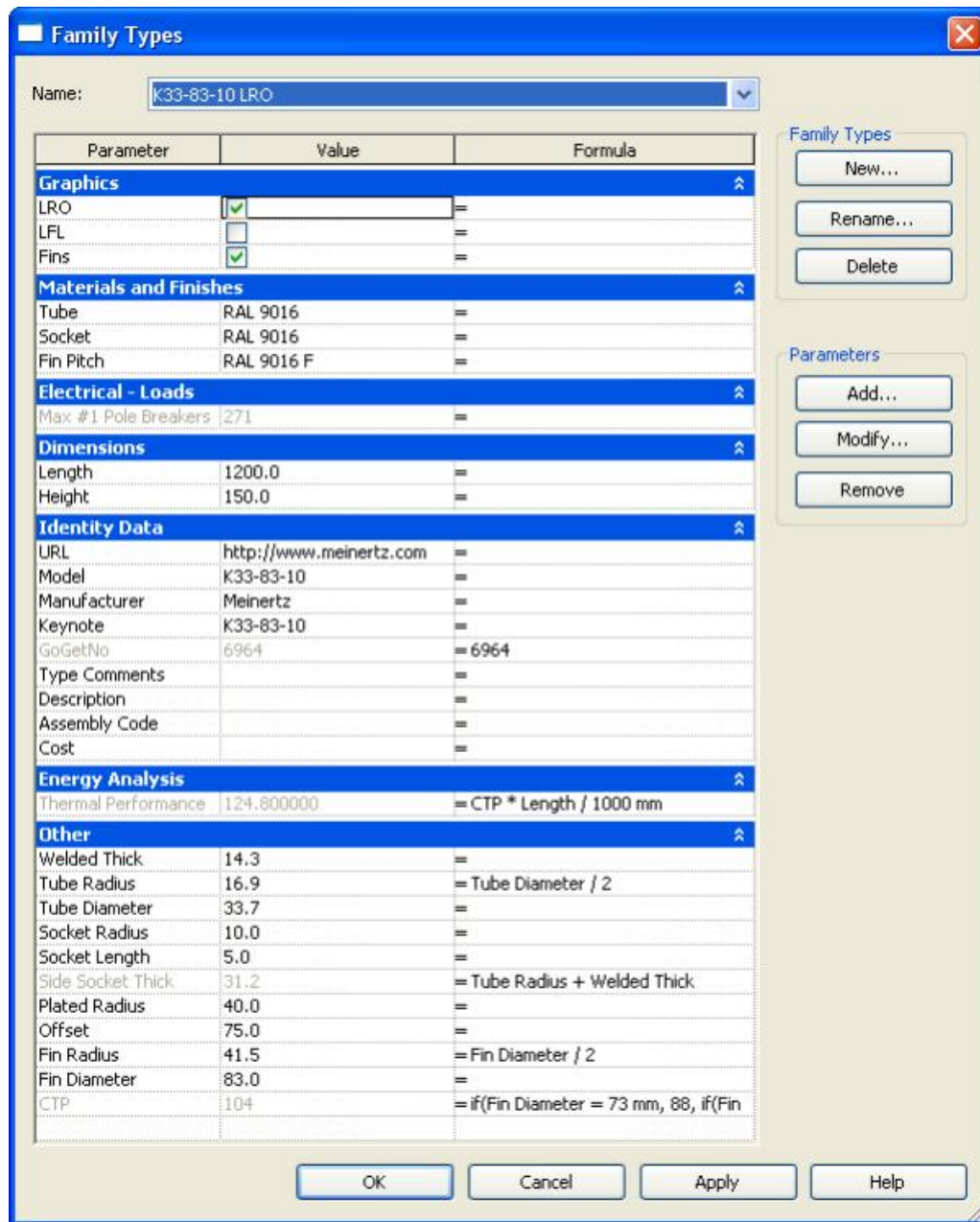


Figure A.04

Type - K33-83-10 LRO
Family Parameter Reference

5. Type - K42-92-10 LFL

Family Types

Name:

Parameter	Value	Formula
Graphics		
LRO		=
LFL	<input checked="" type="checkbox"/>	=
Fins	<input checked="" type="checkbox"/>	=
Materials and Finishes		
Tube	RAL 9016	=
Socket	RAL 9016	=
Fin Pitch	RAL 9016 F	=
Electrical - Loads		
Max #1 Pole Breakers	1271	=
Dimensions		
Length	1000.0	=
Height	150.0	=
Identity Data		
URL	http://www.meinertz.com	=
Model	K42-92-10	=
Manufacturer	Meinertz	=
Keynote	K42-92-10	=
GoGetNo	6964	= 6964
Type Comments		=
Description		=
Assembly Code		=
Cost		=
Energy Analysis		
Thermal Performance	88.000000	= CTP * Length / 1000 mm
Other		
Welded Thick	10.0	=
Tube Radius	21.2	= Tube Diameter / 2
Tube Diameter	42.4	=
Socket Radius	10.0	=
Socket Length	5.0	=
Side Socket Thick	31.2	= Tube Radius + Welded Thick
Plated Radius	45.0	=
Offset	75.0	=
Fin Radius	46.0	= Fin Diameter / 2
Fin Diameter	92.0	=
CTP	88	= if(Fin Diameter = 73 mm, 88, if(Fin

Family Types

New...
Rename...
Delete

Parameters

Add...
Modify...
Remove

OK Cancel Apply Help

Figure A.05

Type – K42-92-10 LFL
Family Parameter Reference

6. Type - K42-92-10 LRO

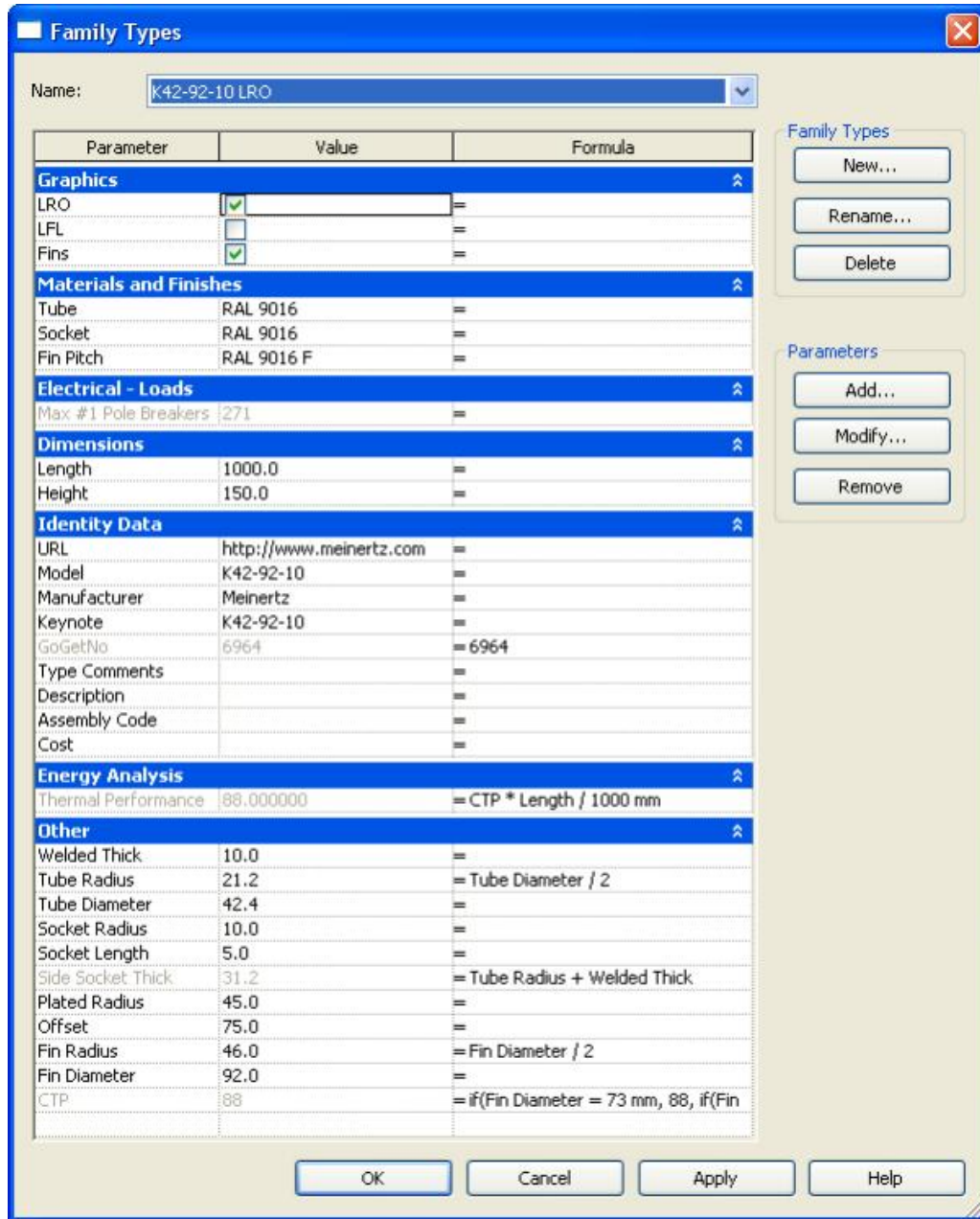


Figure A.06
Type - K42-92-10 LRO
Family Parameter Reference

7. Type - K48-98-10 LFL

Family Types

Name:

Parameter	Value	Formula
Graphics		
LRO		=
LFL	<input checked="" type="checkbox"/>	=
Fins	<input checked="" type="checkbox"/>	=
Materials and Finishes		
Tube	RAL 9016	=
Socket	RAL 9016	=
Fin Pitch	RAL 9016 F	=
Electrical - Loads		
Max #1 Pole Breakers	271	=
Dimensions		
Length	1200.0	=
Height	150.0	=
Identity Data		
URL	http://www.meinertz.com	=
Model	K48-98-10	=
Manufacturer	Meinertz	=
Keynote	K48-98-10	=
GoGetNo	6964	= 6964
Type Comments		=
Description		=
Assembly Code		=
Cost		=
Energy Analysis		
Thermal Performance	98.400000	= CTP * Length / 1000 mm
Other		
Welded Thick	10.0	=
Tube Radius	24.2	= Tube Diameter / 2
Tube Diameter	48.3	=
Socket Radius	10.0	=
Socket Length	5.0	=
Side Socket Thick	34.2	= Tube Radius + Welded Thick
Plated Radius	50.0	=
Offset	75.0	=
Fin Radius	49.0	= Fin Diameter / 2
Fin Diameter	98.0	=
CTP	82	= if(Fin Diameter = 73 mm, 88, if(Fin

Family Types

New...
Rename...
Delete

Parameters

Add...
Modify...
Remove

OK Cancel Apply Help

Figure A.07

Type – K48-98-10 LFL
Family Parameter Reference

8. Type – K48-98-10 LRO

Family Types

Name:

Parameter	Value	Formula
Graphics		
LRO	<input checked="" type="checkbox"/>	=
LFL	<input type="checkbox"/>	=
Fins	<input checked="" type="checkbox"/>	=
Materials and Finishes		
Tube	RAL 9016	=
Socket	RAL 9016	=
Fin Pitch	RAL 9016 F	=
Electrical - Loads		
Max #1 Pole Breakers	271	=
Dimensions		
Length	1200.0	=
Height	150.0	=
Identity Data		
URL	http://www.meinertz.com	=
Model	K48-98-10	=
Manufacturer	Meinertz	=
Keynote	K48-98-10	=
GoGetNo	6964	= 6964
Type Comments		=
Description		=
Assembly Code		=
Cost		=
Energy Analysis		
Thermal Performance	98.400000	= CTP * Length / 1000 mm
Other		
Welded Thick	10.0	=
Tube Radius	24.2	= Tube Diameter / 2
Tube Diameter	48.3	=
Socket Radius	10.0	=
Socket Length	5.0	=
Side Socket Thick	34.2	= Tube Radius + Welded Thick
Plated Radius	50.0	=
Offset	75.0	=
Fin Radius	49.0	= Fin Diameter / 2
Fin Diameter	98.0	=
CTP	82	= if(Fin Diameter = 73 mm, 88, if(Fin

Family Types

New...
Rename...
Delete

Parameters

Add...
Modify...
Remove

OK Cancel Apply Help

Figure A.08
Type – K48-98-10 LRO
Family Parameter Reference

9. Type - K60-110-10 LFL

Family Types

Name:

Parameter	Value	Formula
Graphics		
LRO		=
LFL	<input checked="" type="checkbox"/>	=
Fins	<input checked="" type="checkbox"/>	=
Materials and Finishes		
Tube	RAL 9016	=
Socket	RAL 9016	=
Fin Pitch	RAL 9016 F	=
Electrical - Loads		
Max #1 Pole Breakers	271	=
Dimensions		
Length	1200.0	=
Height	150.0	=
Identity Data		
URL	http://www.meinertz.com	=
Model	K60-110-10	=
Manufacturer	Meinertz	=
Keynote	K60-110-10	=
GoGetNo	6964	= 6964
Type Comments		=
Description		=
Assembly Code		=
Cost		=
Energy Analysis		
Thermal Performance	216.000000	= CTP * Length / 1000 mm
Other		
Welded Thick	10.0	=
Tube Radius	30.2	= Tube Diameter / 2
Tube Diameter	60.3	=
Socket Radius	10.0	=
Socket Length	5.0	=
Side Socket Thick	40.2	= Tube Radius + Welded Thick
Plated Radius	67.5	=
Offset	75.0	=
Fin Radius	55.0	= Fin Diameter / 2
Fin Diameter	110.0	=
CTP	180	= if(Fin Diameter = 73 mm, 88, if(Fin

Family Types

New...
Rename...
Delete

Parameters

Add...
Modify...
Remove

OK Cancel Apply Help

Figure A.09
Type - K60-110-10 LFL
Family Parameter Reference

10. Type - K60-110-10 LRO

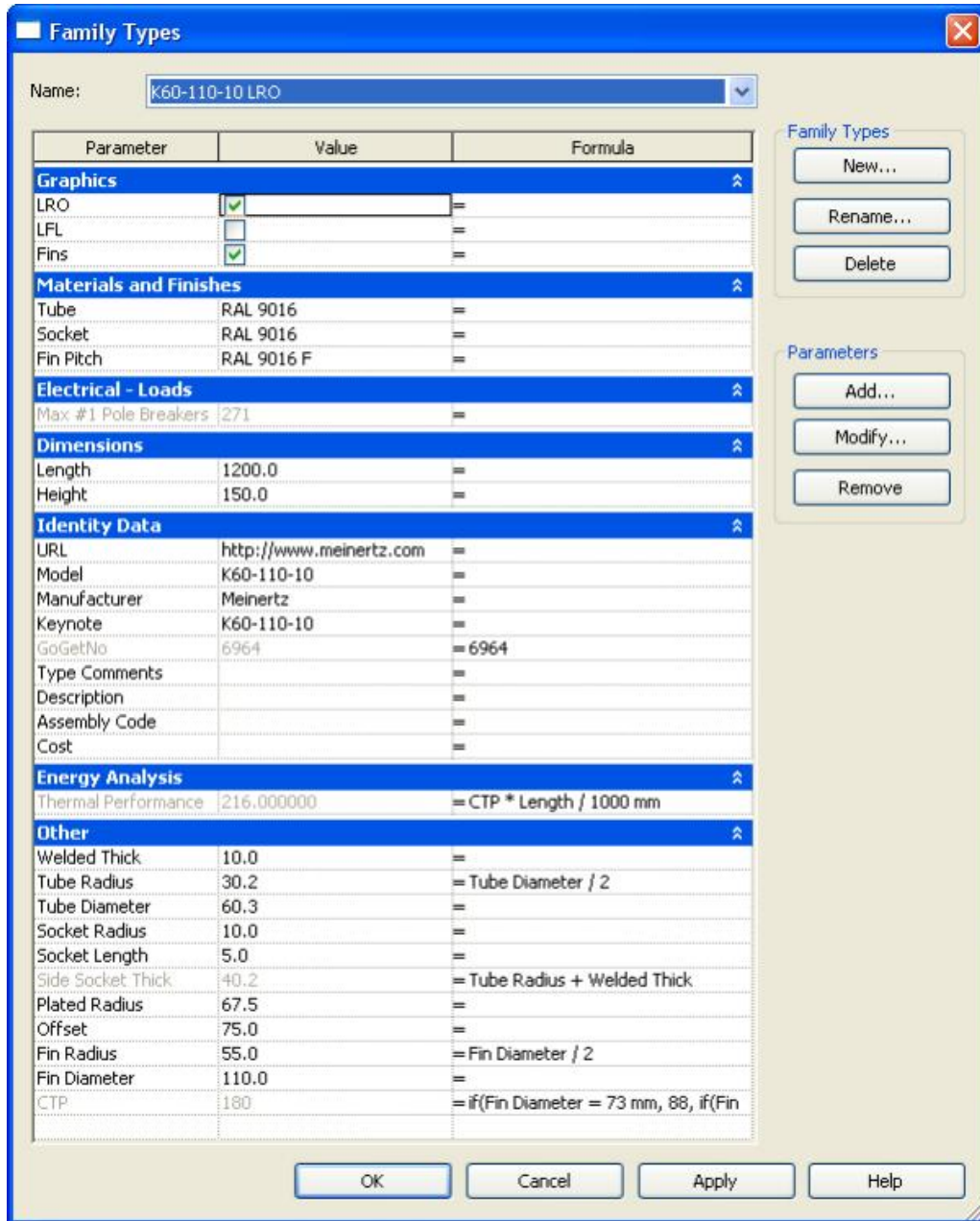


Figure A.10
 Type - K60-110-10 LRO
 Family Parameter Reference

11. Type - K60-123-12 LFL

Family Types

Name:

Parameter	Value	Formula
Graphics		
LRO		=
LFL	<input checked="" type="checkbox"/>	=
Fins	<input checked="" type="checkbox"/>	=
Materials and Finishes		
Tube	RAL 9016	=
Socket	RAL 9016	=
Fin Pitch	RAL 9016 F	=
Electrical - Loads		
Max #1 Pole Breakers	1271	=
Dimensions		
Length	1200.0	=
Height	150.0	=
Identity Data		
URL	http://www.meinertz.com	=
Model	K60-123-12	=
Manufacturer	Meinertz	=
Keynote	K60-123-12	=
GoGetNo	6964	= 6964
Type Comments		=
Description		=
Assembly Code		=
Cost		=
Energy Analysis		
Thermal Performance	132.000000	= CTP * Length / 1000 mm
Other		
Welded Thick	10.0	=
Tube Radius	30.2	= Tube Diameter / 2
Tube Diameter	60.3	=
Socket Radius	10.0	=
Socket Length	5.0	=
Side Socket Thick	40.2	= Tube Radius + Welded Thick
Plated Radius	50.0	=
Offset	75.0	=
Fin Radius	61.5	= Fin Diameter / 2
Fin Diameter	123.0	=
CTP	110	= if(Fin Diameter = 73 mm, 88, if(Fin

Family Types

New...
Rename...
Delete

Parameters

Add...
Modify...
Remove

OK Cancel Apply Help

Figure A.11

Type – K60-123-12 LFL
Family Parameter Reference

12. Type - K60-123-12 LRO

Family Types

Name:

Parameter	Value	Formula
Graphics		
LRO	<input checked="" type="checkbox"/>	=
LFL	<input type="checkbox"/>	=
Fins	<input checked="" type="checkbox"/>	=
Materials and Finishes		
Tube	RAL 9016	=
Socket	RAL 9016	=
Fin Pitch	RAL 9016 F	=
Electrical - Loads		
Max #1 Pole Breakers	271	=
Dimensions		
Length	1200.0	=
Height	150.0	=
Identity Data		
URL	http://www.meinertz.com	=
Model	K60-123-12	=
Manufacturer	Meinertz	=
Keynote	K60-123-12	=
GoGetNo	6964	= 6964
Type Comments		=
Description		=
Assembly Code		=
Cost		=
Energy Analysis		
Thermal Performance	132.000000	= CTP * Length / 1000 mm
Other		
Welded Thick	10.0	=
Tube Radius	30.2	= Tube Diameter / 2
Tube Diameter	60.3	=
Socket Radius	10.0	=
Socket Length	5.0	=
Side Socket Thick	40.2	= Tube Radius + Welded Thick
Plated Radius	50.0	=
Offset	75.0	=
Fin Radius	61.5	= Fin Diameter / 2
Fin Diameter	123.0	=
CTP	110	= if(Fin Diameter = 73 mm, 88, if(Fin

Family Types

New...
Rename...
Delete

Parameters

Add...
Modify...
Remove

OK Cancel Apply Help

Figure A.12
Type - K60-123-12 LRO
Family Parameter Reference

13. Type - K76-139-12 LFL

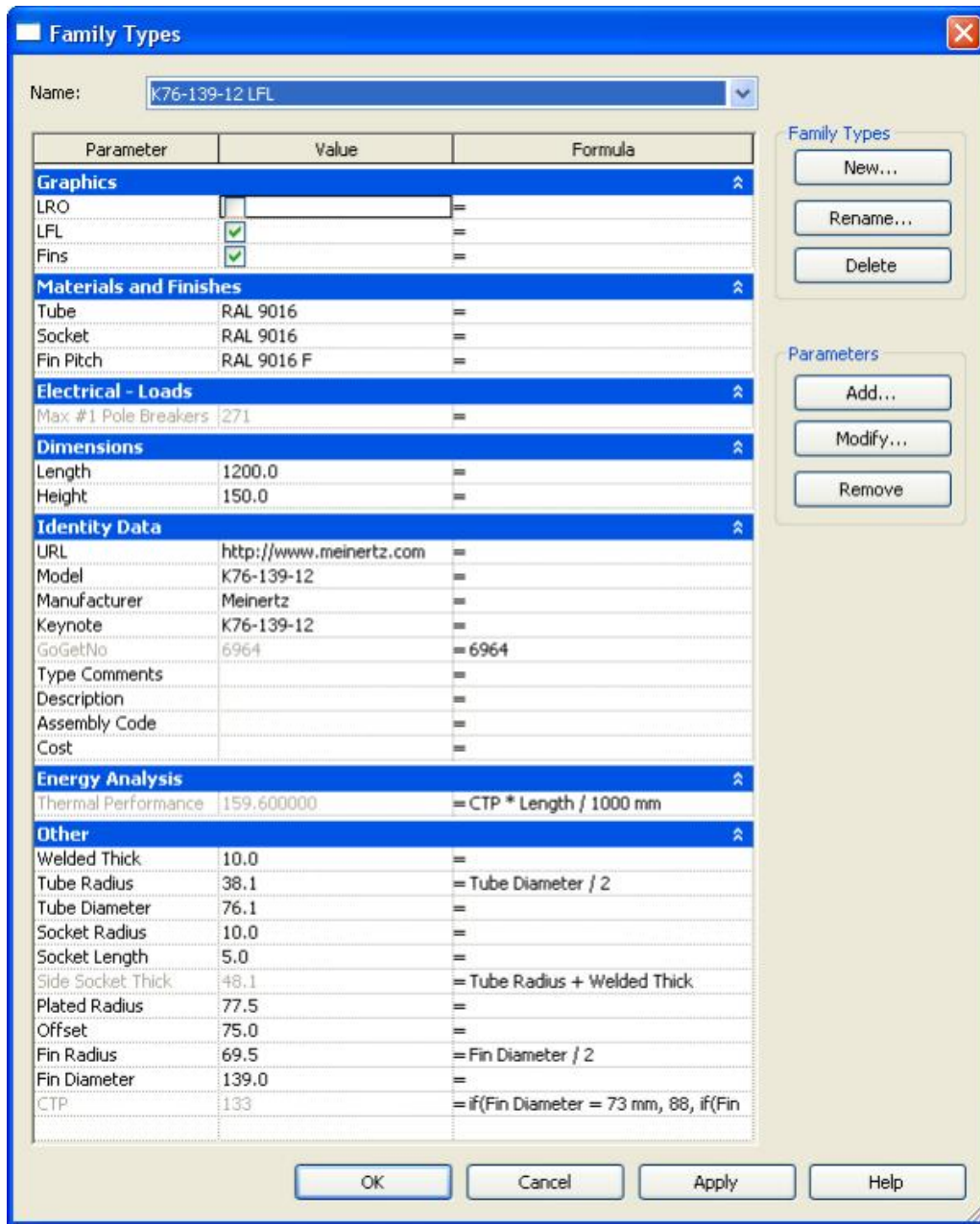


Figure A.13
Type – K76-139-12 LFL
Family Parameter Reference

14. Type - K76-139-12 LRO

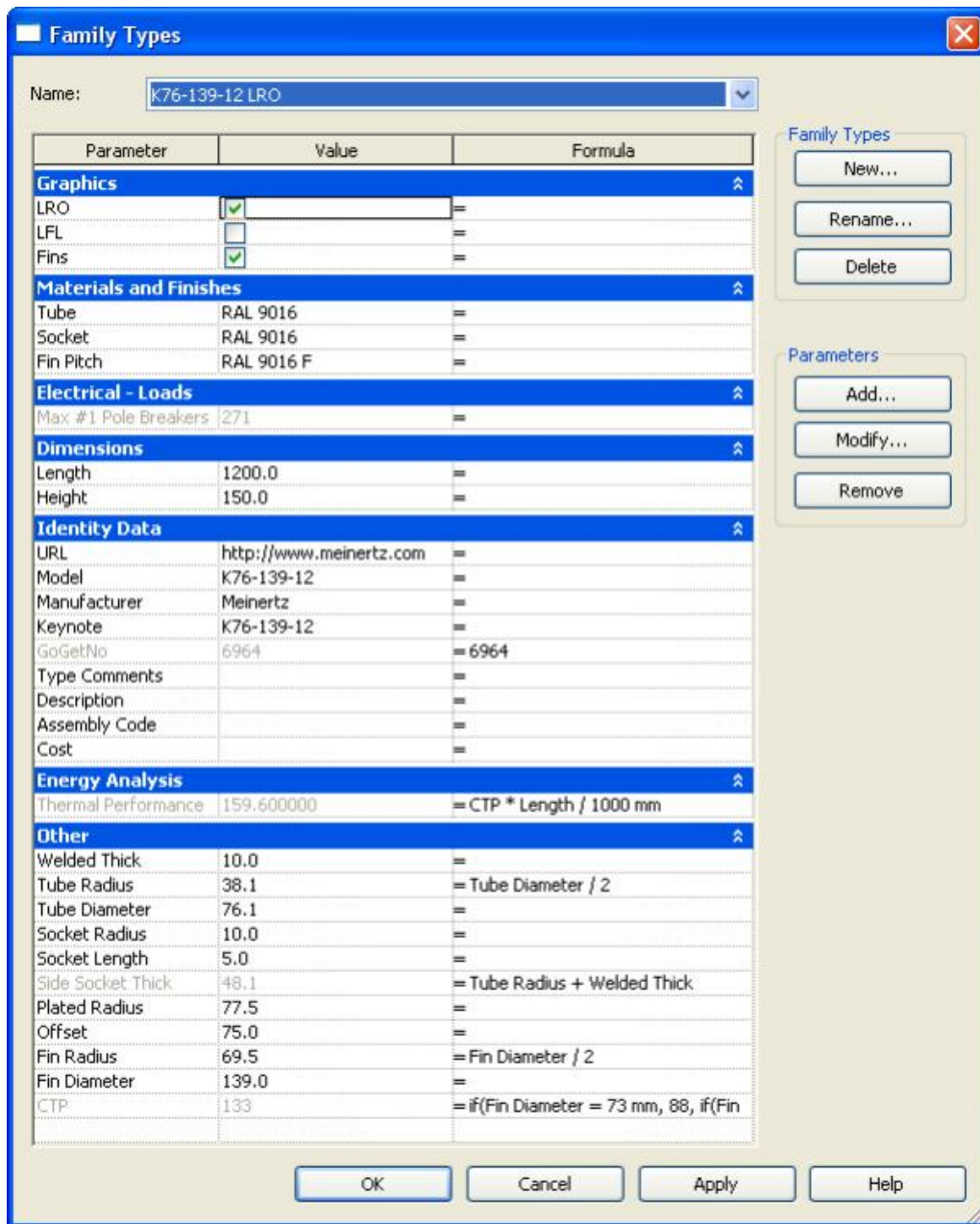


Figure A.14
 Type - K76-139-12 LRO
 Family Parameter Reference

15. Type - K101-164-12 LFL

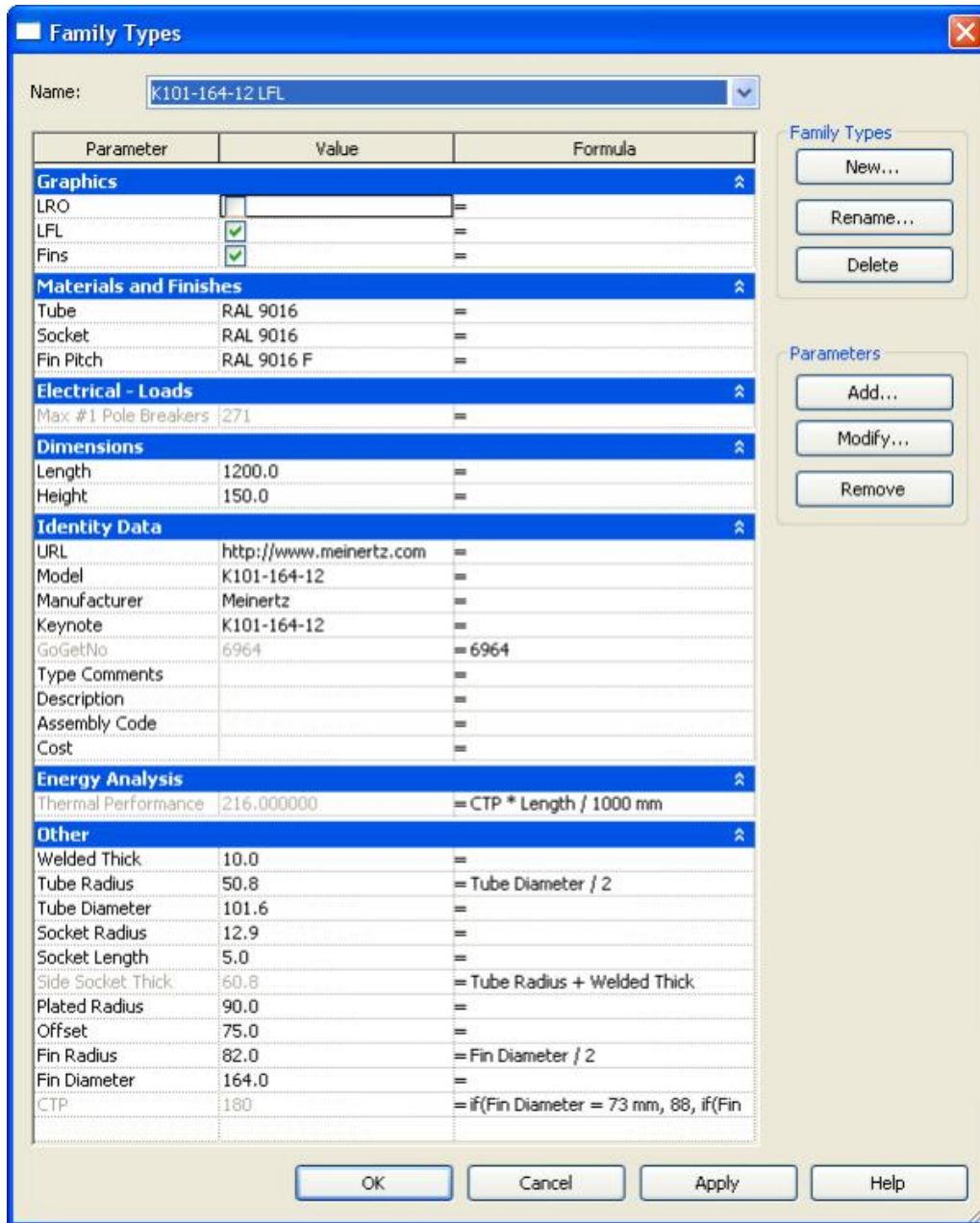


Figure A.15
Type – K101-164-12 LFL
Family Parameter Reference

16. Type – K101-164-12 LRO

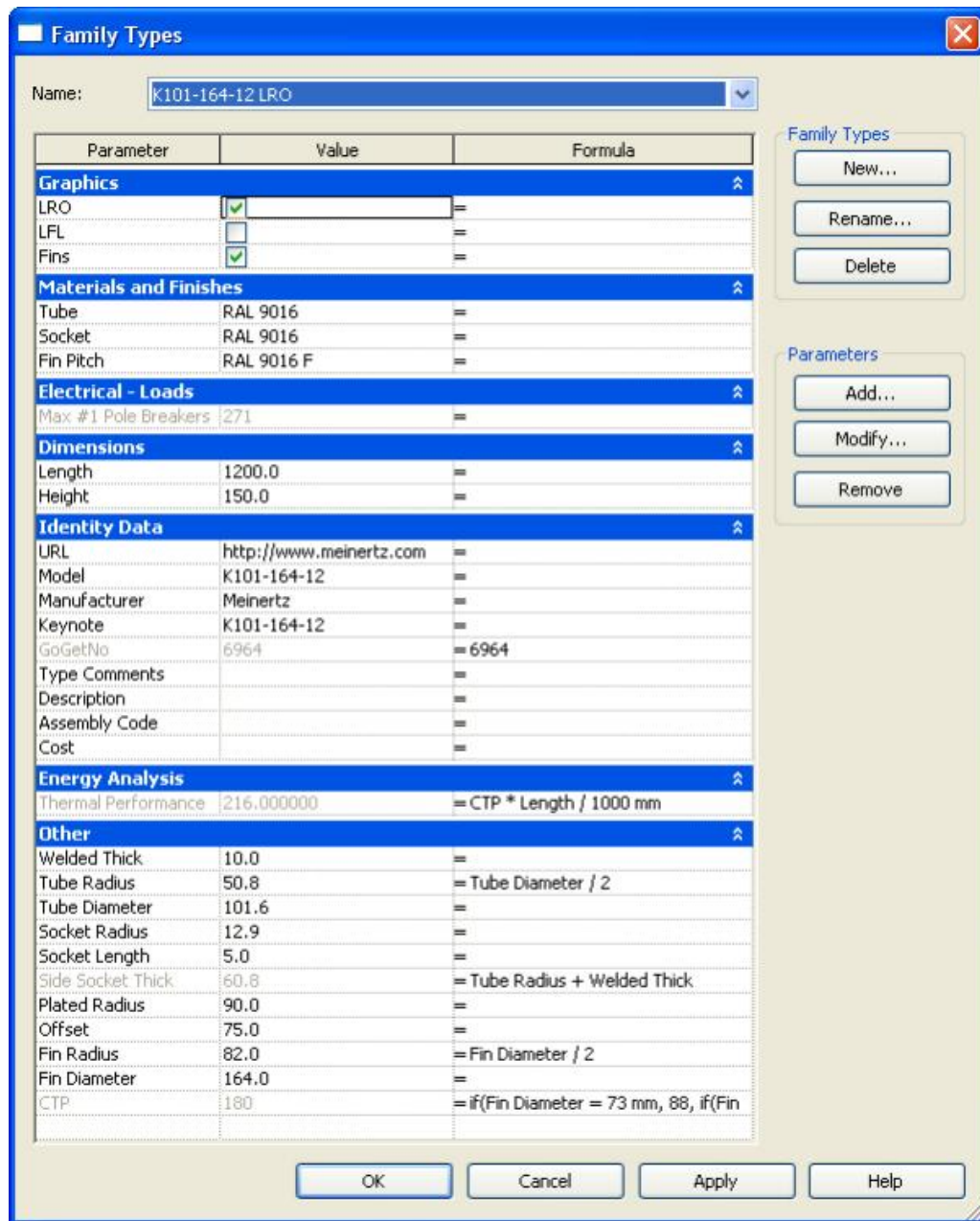


Figure A.16
 Type – K101-164-12 LRO
 Family Parameter Reference