



MEINERTZ CONVECTORS AND RADIATORS

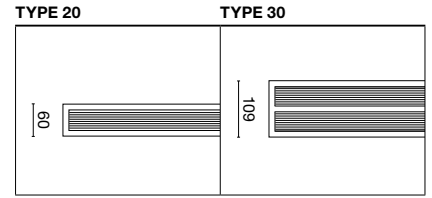
MEINERTZ



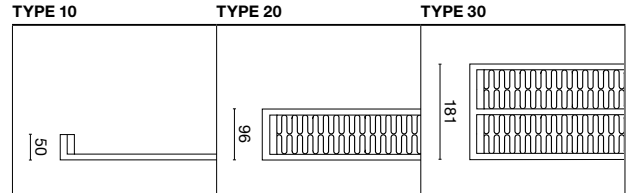
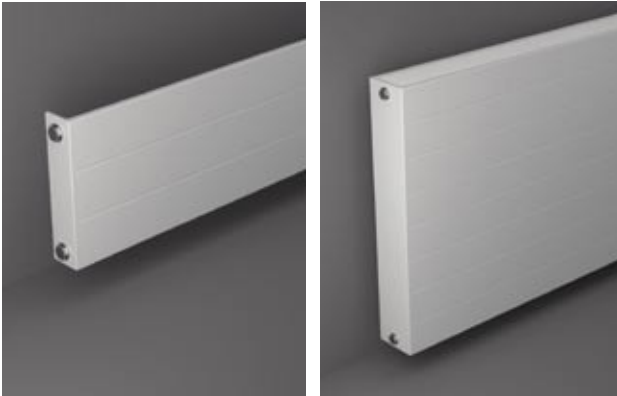


The T series Discreet and elegant design solutions for the wall or floor. The minimalist expression is emphasised by convector fronts with horizontal lines that meet the closed convector ends without visible joints. Available with or without integrated top grille. Large heat output and great flexibility in choice of height, depth and length. Also available as special models with integrated legs or built-in thermostat valve.

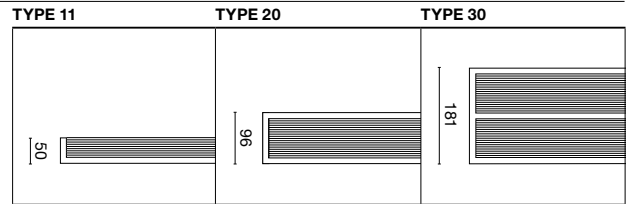
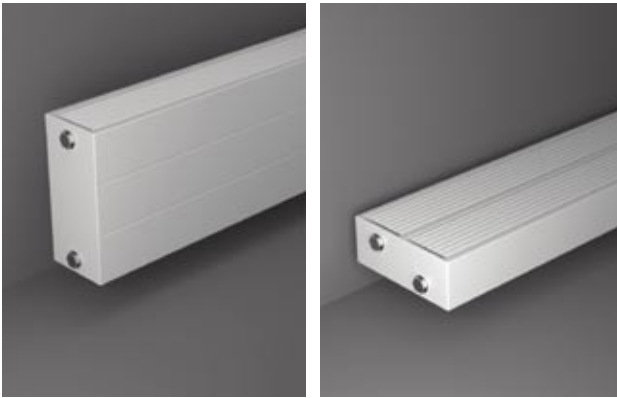
TS



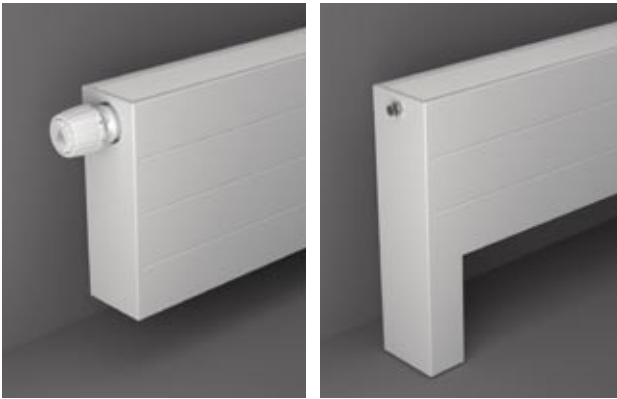
TL



TX



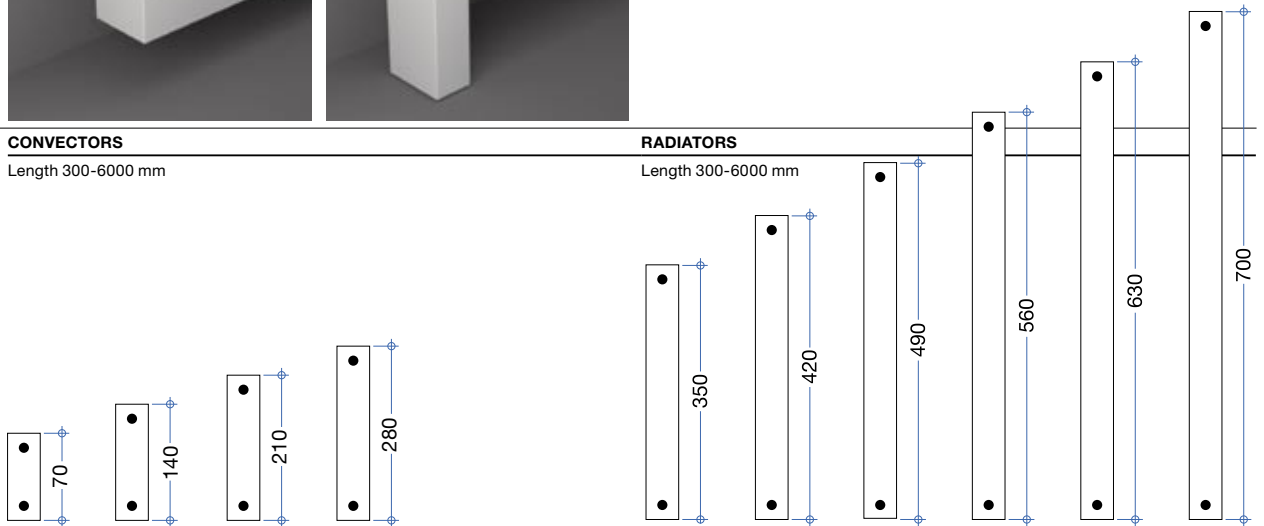
Special solutions



CONVECTORS
Length 300-6000 mm

RADIATORS
Length 300-6000 mm

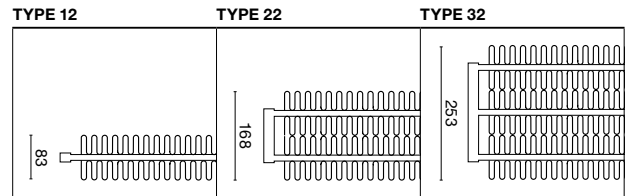
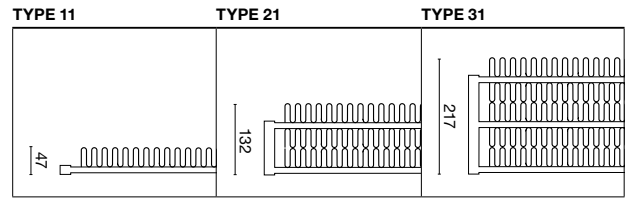
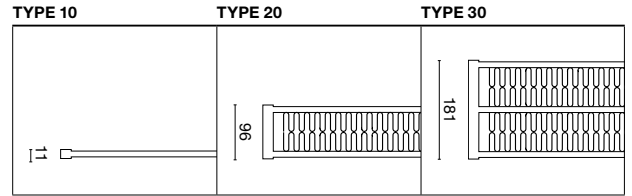
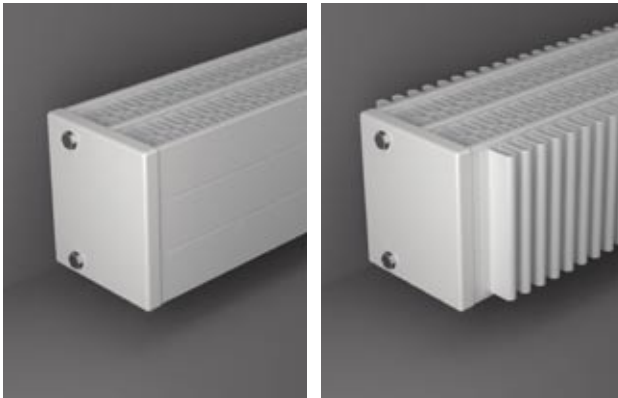
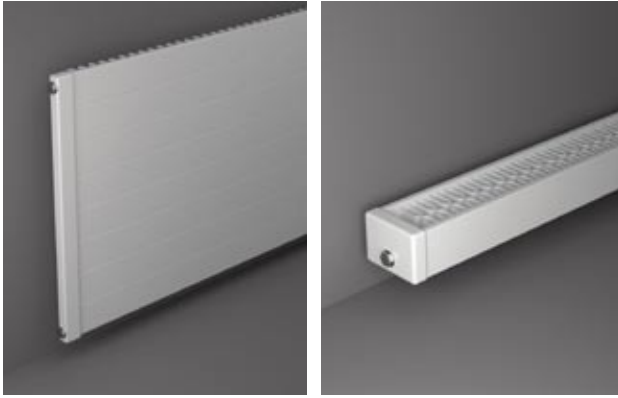
Height



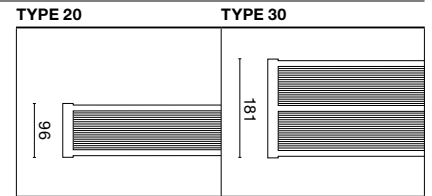


The C series The classic convector and radiator solution, in a compact design with distinctive convective ends. Its well-thought-out construction makes the C series a high-performance, energy-saving solution which is easy to regulate, thanks to its minimal water content. Can be supplied with or without integrated top grille. Uncompromising quality and finish. Available in all sizes from small church pew convectors to wall radiators in very large dimensions.

CL



CX



Classic style at its most modern

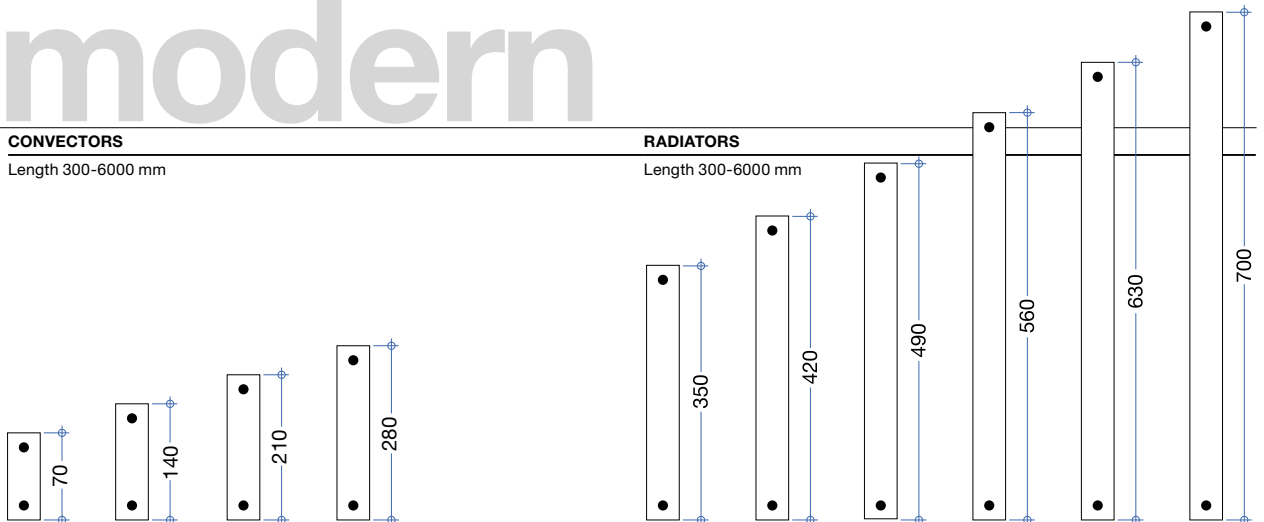
CONVECTORS

Length 300-6000 mm

RADIATORS

Length 300-6000 mm

Height



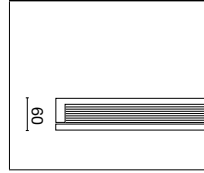


The TF series Possibly the most elegant plan radiators on the market. These plan radiators are suitable for both horizontal and vertical installation, thanks to their beautifully simple design. The TF series is based on the T series design, but the front panel is non-water-bearing, and consequently does not become hot. As a result, the panel can be decorated as a work of art, or painted for use as a blackboard. The plan radiator is easy to clean, and has a large heat output. It is ideal for kindergartens and other places where people may come into close proximity with the radiators.

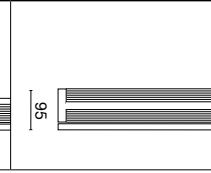
TF



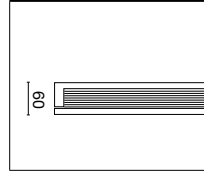
TYPE 10



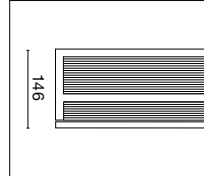
TYPE 12



TYPE 11



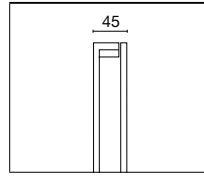
TYPE 21



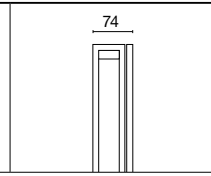
TF



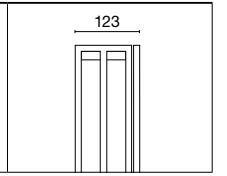
TYPE 10



TYPE 20



TYPE 30



Cool to the touch, but plenty of heat inside

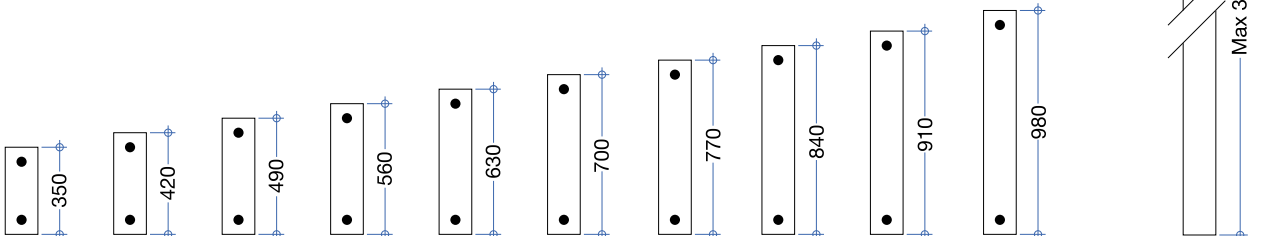
RADIATORS

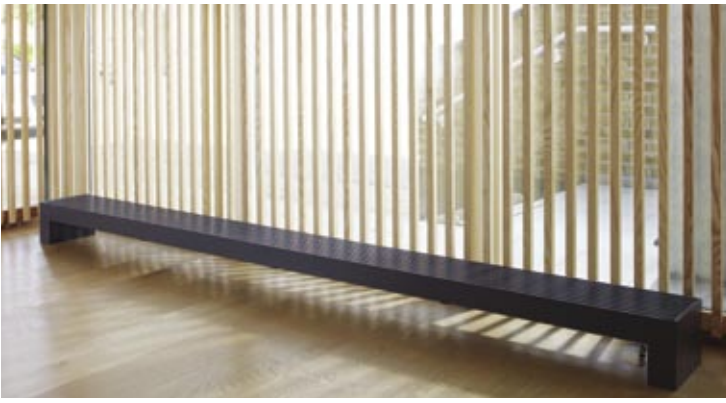
HORIZONTAL
Length 300-6000 mm

RADIATORS

VERTICAL
Width
300-980 mm

Height



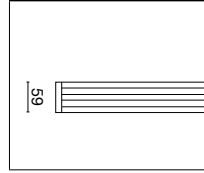


Design radiators In buildings with large glass panels, facade convectors can be discreetly mounted either horizontally or vertically along the window divisions to counteract cold downdraughts. Convector benches are elegant and useful design elements which provide space heating and protect against downdraughts in front of windows. Supplied with water-bearing profiled tubing mounted on legs which function as closed end gables, or with both the legs and the bench seat in continuous water-bearing profiled tubing.

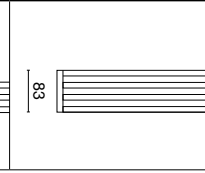
SL



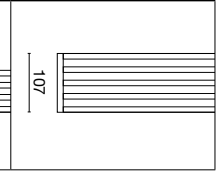
TYPE 03



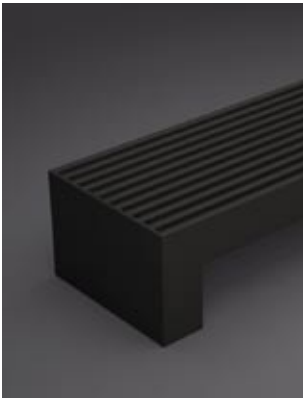
TYPE 04



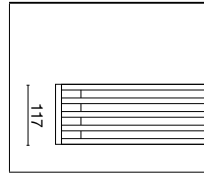
TYPE 05



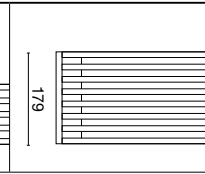
SP



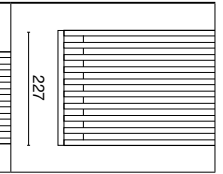
TYPE 05



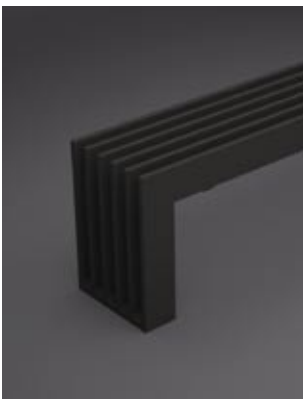
TYPE 08



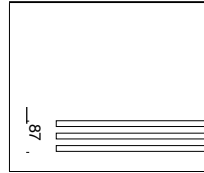
TYPE 10



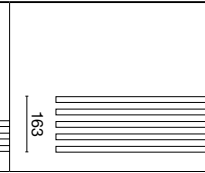
LL



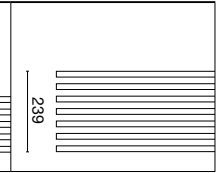
TYPE 03



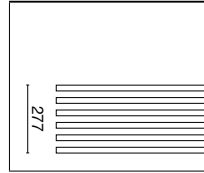
TYPE 05



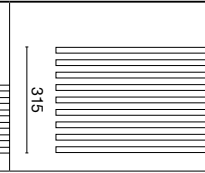
TYPE 07



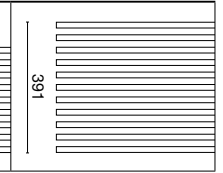
TYPE 08



TYPE 09



TYPE 11



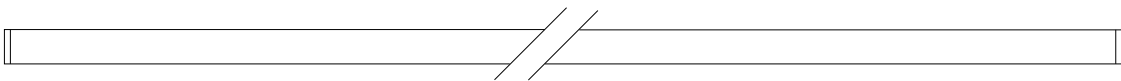
MEINERTZ

The architects' choice – a warm solution

SL

Length max 3000 mm

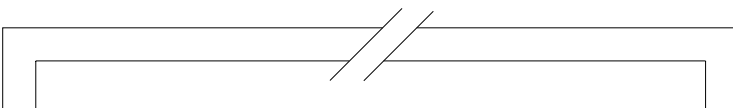
Min 70



SP + LL

Length max 6000 mm

Min 180

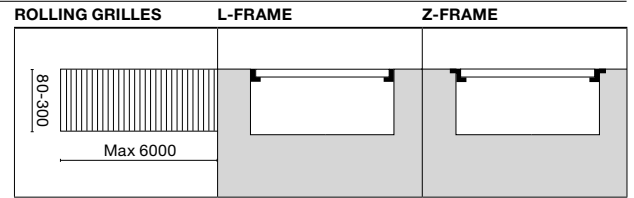
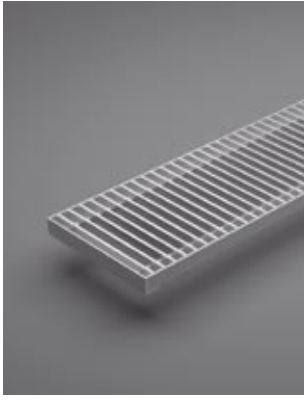


Height

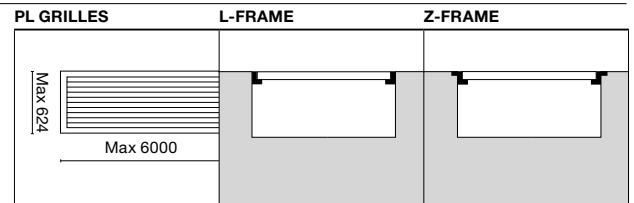


Grilles and frames When the convectors are fitted in trenches or channels, the right choice of covering for the heat source can make a big difference to the architecture, heat distribution and ease of cleaning. MEINERTZ rolling grilles are made of aluminium extrusions, held together by powerful steel springs and stable spacing plates. This means that the grilles can be rolled up whenever servicing or cleaning is required. Supplied in natural look, brass or black-anodised. Also available for vertical installation under benches, etc. MEINERTZ PL grilles are fixed steel grilles in a stylish design, for places that need to cope with a lot of wear. The grilles can be supplied in straight or curving lengths, and in all the RAL colours.

Rolling grilles



PL grilles



Danish design
and Danish quality
speaks its
own language

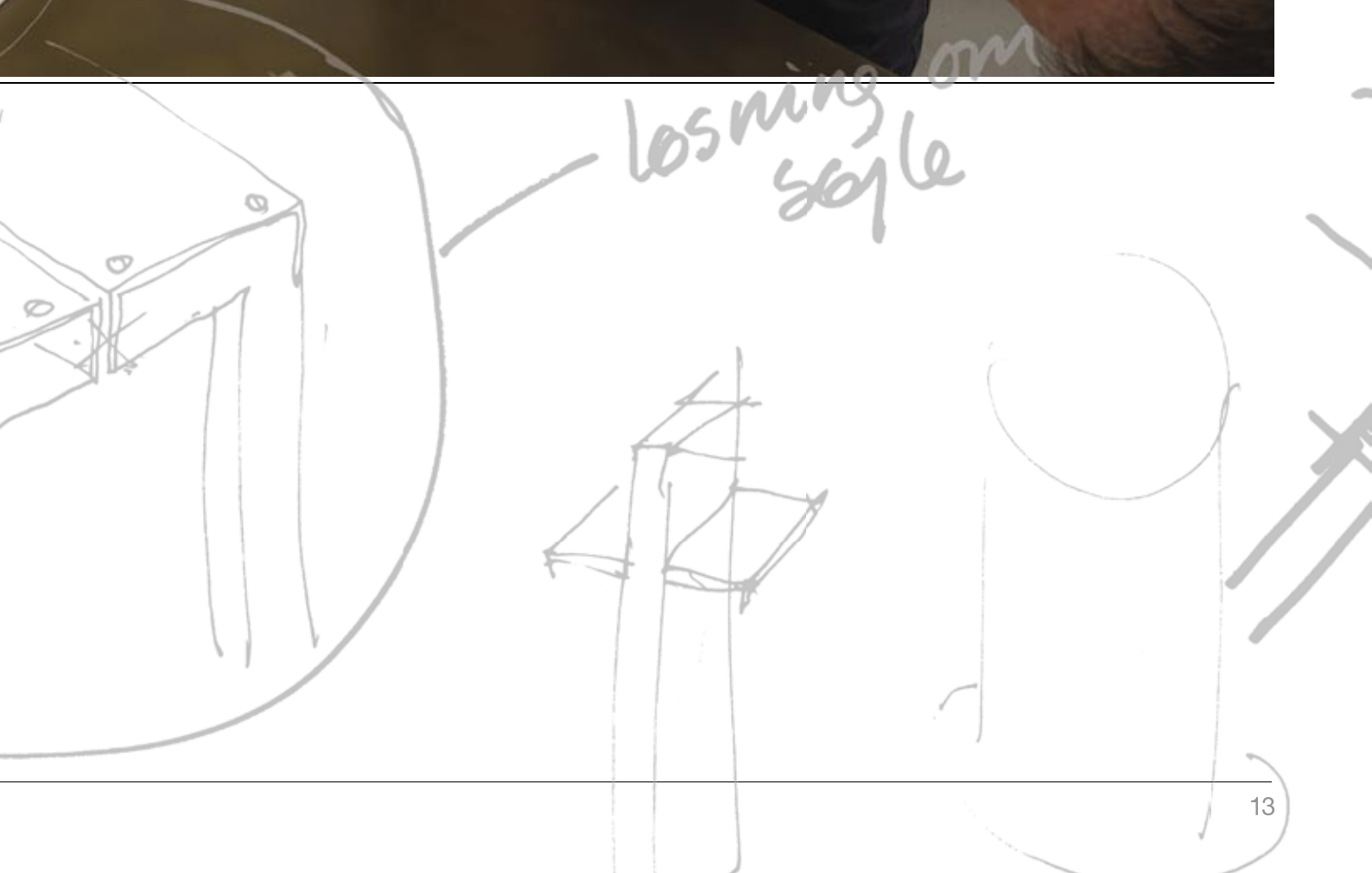
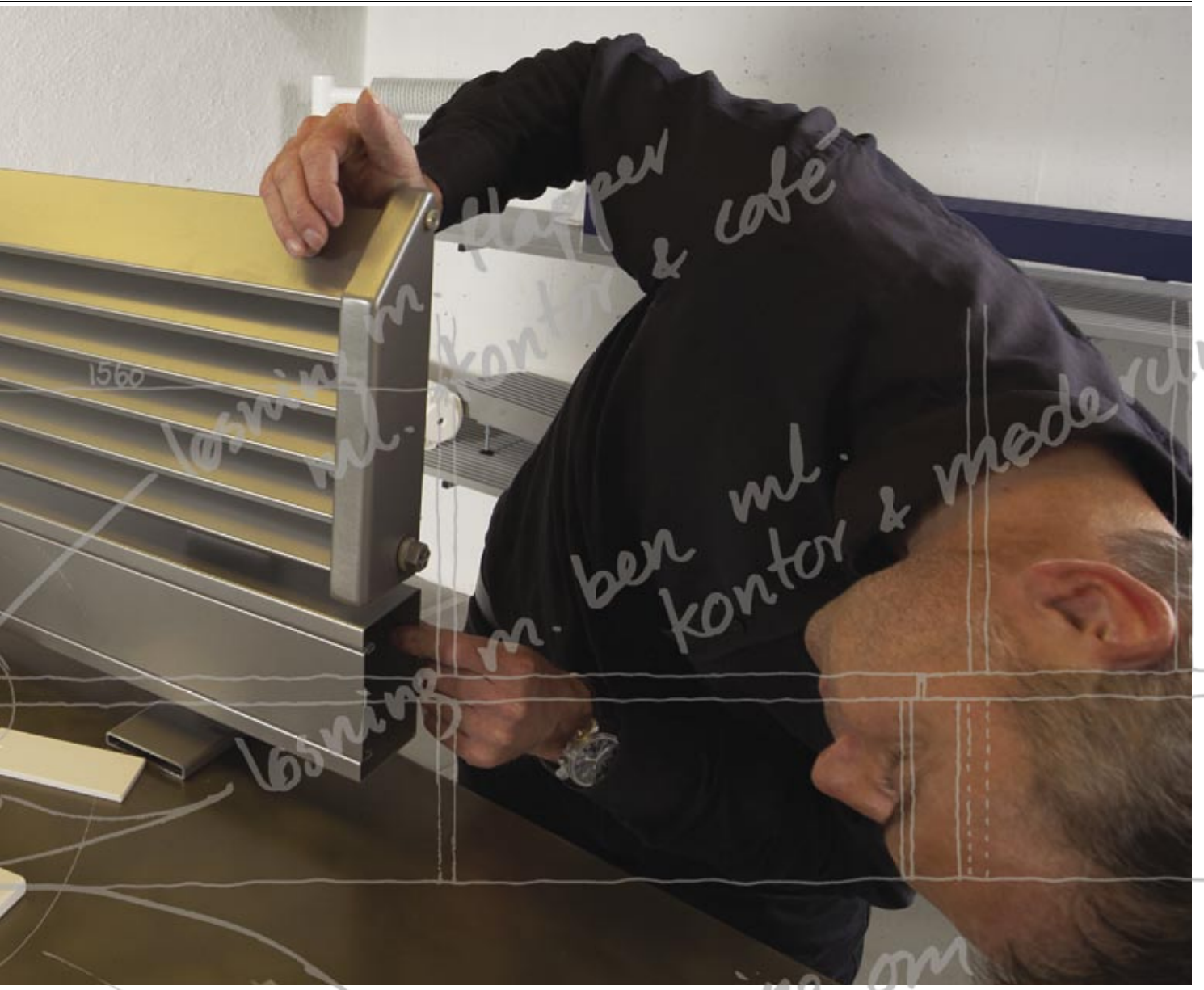
Custom-made
when you
want to match the
surroundings

Discreet or
decorative, stylish
or bright and
colourful



MEINERTZ RadLab is an exploratorium for architects, designers and others who work to create buildings in which all of the details form a harmonious architectural whole. MEINERTZ RadLab has everything you need to create or try out ideas for heaters as architectural elements, in the company of experienced heating design professionals. MEINERTZ RadLab is a combination of playground and workshop, where creativity, functionality and fine craftsmanship go hand in hand.

Design your own radiator, next time you are working on a project that deserves more than just a standard solution. Try a workshop at MEINERTZ RadLab.



Technical data

Convectors and radiators

Lengths:

MEINERTZ convectors and radiators are supplied in the precise length desired, up to 6 metres.

Colours:

As standard, all MEINERTZ products are supplied powder-lacquered in the colour RAL 9016 (traffic white), but other RAL and NSC colours are available on demand.

Mounting:

MEINERTZ convectors and radiators can be mounted on walls, floors or, for example, church pews with the help of standard brackets. If you have any special fitting requirements, we will be happy to design and manufacture special brackets. All brackets are supplied in the same colour as the convectors or radiators.

CE labelling:

All MEINERTZ convectors and radiators are CE-labelled.

Delivery:

All MEINERTZ products are custom-made for the individual projects, but our efficient production system ensures short delivery times.

Environment:

MEINERTZ is a CO₂-neutral company that exclusively utilises energy from alternative energy sources. All of our products are made of materials that are 100% recyclable. All our transport packaging is made from plain wood. All excess powder used in the powder-lacquering process is recycled in our high-efficiency paint cabin.

Further information:

Technical data sheets and information on type designations, heat output, sockets, etc. may be downloaded from www.meinertz.com or obtained from our consultants.

You can find lots of ideas for creative uses of MEINERTZ products at our website and in our inspiration catalogue.





MEINERTZ is more MEINERTZ means Danish design and craftsmanship. All of our products are custom-made in Denmark to match the dimensions and requirements of the individual projects. In addition to finned and smooth tubes, MEINERTZ also supplies convectors and radiators, ProLine convection grilles and Convec comfort panels, which, for example, provide optimum possibilities for integrating heaters into buildings with glass panels from floor to ceiling. MEINERTZ finned tubes are an ideal and efficient choice for heating large spaces, and in places where the rustic or colourful pipes can function as sculptural forms in the building. MEINERTZ provides guidance in the planning phase, assistance with measurement, and follow-up service when the installation is in operation.

MEINERTZ A/S

Sverigesvej 11
DK-8660 Skanderborg
Denmark
Tel. +45 8652 1811
Fax +45 8652 1515
E-mail meinertz@meinertz.com
www.meinertz.com

www.moesgaard-as.dk DK-01-2017

MEINERTZ

