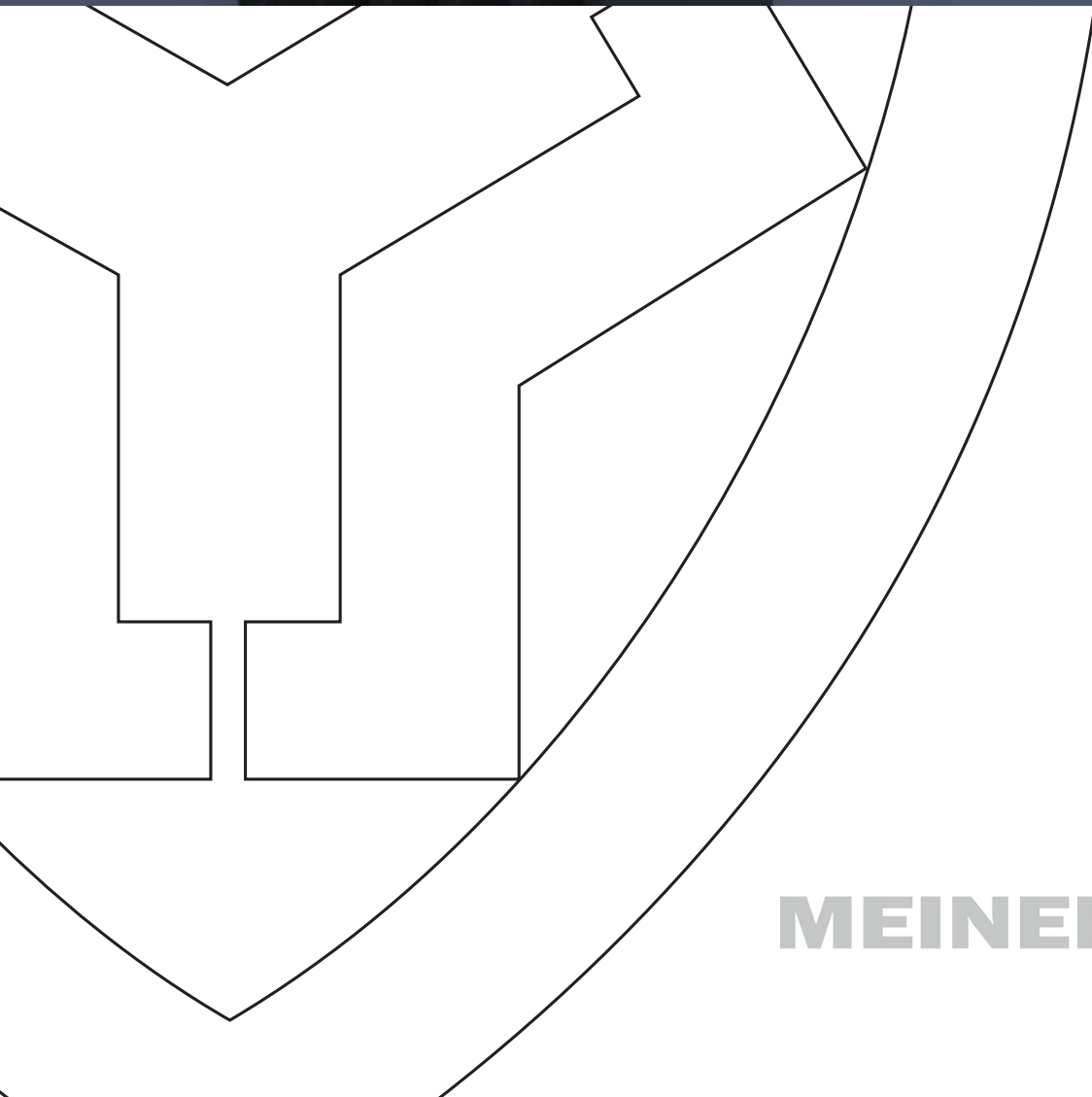


**Have it your way!
Have your thoughts and ideas
turned into solutions!**

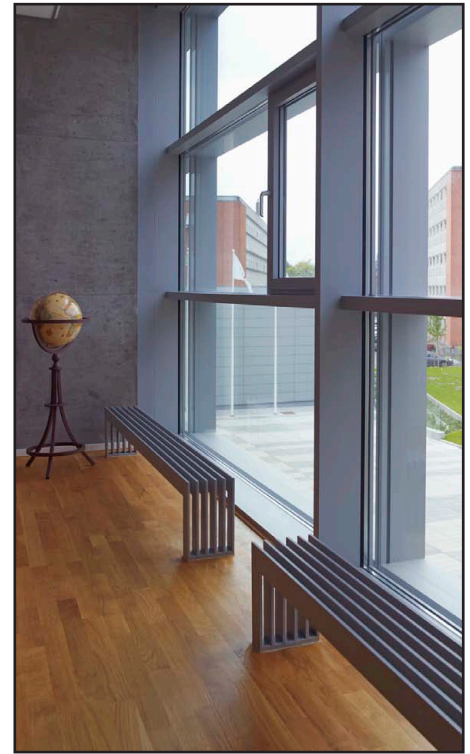
**Unique for you -
or unique for everyone.**

MEINERTZ Customs Solutions



MEINERTZ





MEINERTZ L-Line

Uses

MEINERTZ L-Line is a unique and aesthetically attractive solution which can be used to counteract cold draughts beside large glass panels, or as the primary heating source. It is mounted above the floor, and can thereby form an integrated design solution together with the window panel; an efficient heat source which can be scaled as necessary and adapted to individual projects. Can be installed in both new and existing buildings.

Designation

MEINERTZ L-Line, type LL (number of water filled pipes).

Example: MEINERTZ L-Line, type LL06.

Product

MEINERTZ L-Line is made of 70 x 11 x 2.0 mm pressure-stable steel tubing. The individual elements are spaced 27 mm apart.

Heat output

The estimated heat output at the temperature set 70/40/20 is 55 watts per metre of water-filled pipe. Please contact MEINERTZ A/S for estimated outputs at other temperature sets.

Dimensions

Depth: Number of elements X (27 + 11) – 27 mm

Height: 200 – 350 mm

Length: Max. 3000 mm

The units can be produced in bespoke dimensions.

Control and regulation

The heat output may be regulated by ordinary radiator valves or motorised valves. It is possible to link up to three units together, to a maximum length of 3000 mm.

Connection

3/8" or 1/2" tappings located at the front or back. When using motorised valves, tappings pointing down can be used. In and outlet can be placed in different ways, but never on the same tube. Please contact MEINERTZ for more information on the different possibilities.

Air venting

1/8" air vents are installed in all water-filled steel tubing.

Load

MEINERTZ L-Line can cope up to 80 kg/metre steel tubing.

Weight

2.31 kg/metre steel tubing.

Surface finishing

MEINERTZ L-Line is supplied powder coated in a RAL-colour of your choice. Other colours are available on request at an additional fee.

Packaging

MEINERTZ L-Line is carefully packaged in strong cardboard and wrapped in PE sheeting.

Warranty

A five-year guarantee against defects in materials or workmanship is offered, provided that the unit has been correctly handled and installed.

Maintenance

MEINERTZ L-Line is very easy to clean, as the individual elements are spaced 27 mm apart. Cleaning may be performed with ordinary cleaning agents that do not contain abrasive. Scratches or damages to the surface lacquer may be repaired using traditional spray paint, or by hand-painting with a thin brush.