

Proline med 2 ristdel - buet

GoGeNo: 6947

Family Types Preset

A.01 Type - PLSK 08 05/03

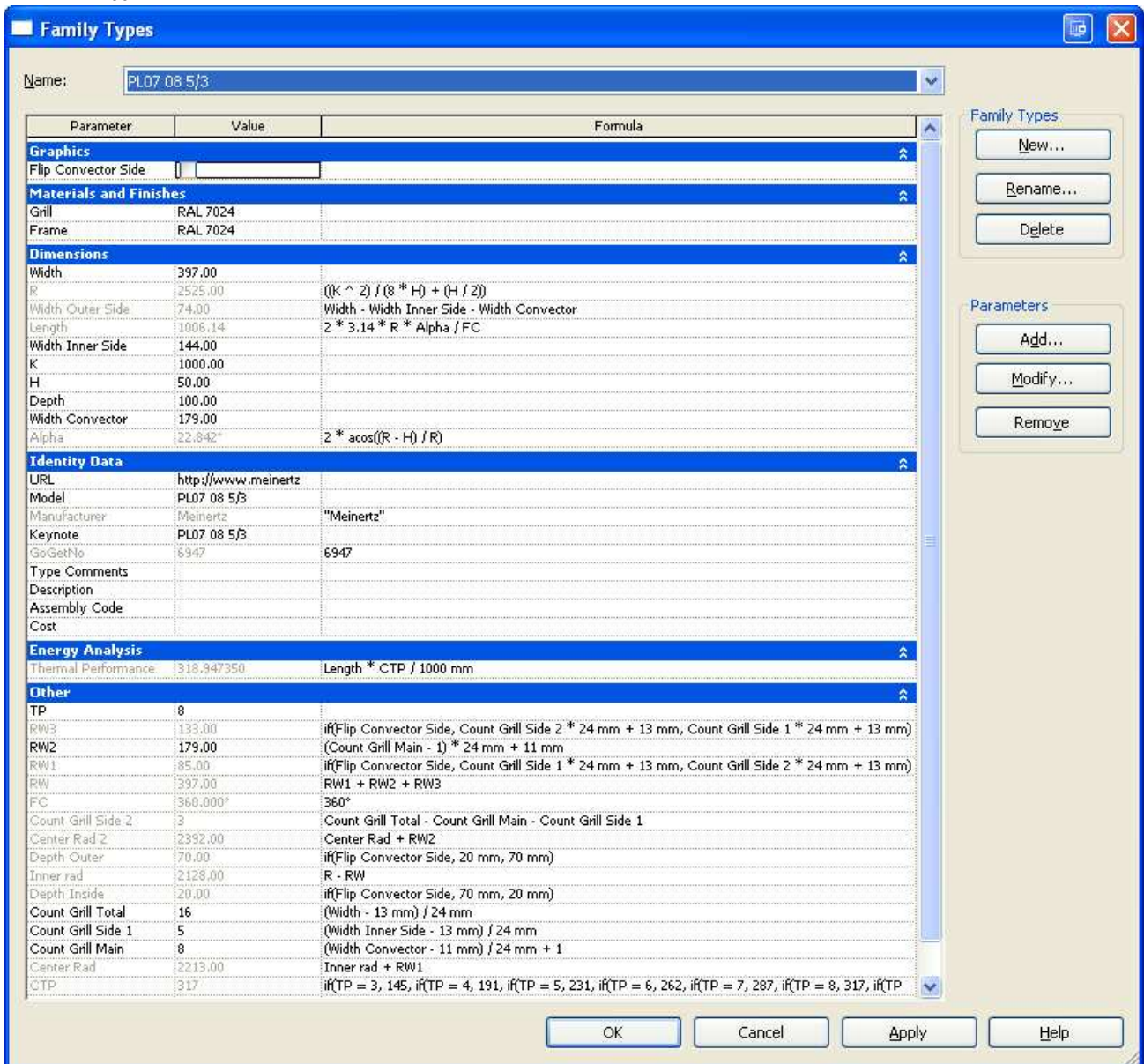


Figure A.01

PLSK 08 05/03

Family Parameter Reference

A.02 Type - PLSK 09 05/04

Family Types

Name:

Parameter	Value	Formula
Graphics		
Flip Convector Side	<input type="text"/>	
Materials and Finishes		
Grill	RAL 7024	
Frame	RAL 7024	
Dimensions		
Width	445.00	
R	2525.00	$((K \wedge 2) / (8 * H) + (H / 2))$
Width Outer Side	98.00	Width - Width Inner Side - Width Convector
Length	1006.14	$2 * 3.14 * R * Alpha / FC$
Width Inner Side	144.00	
K	1000.00	
H	50.00	
Depth	100.00	
Width Convector	203.00	
Alpha	22.842°	$2 * \text{acos}((R - H) / R)$
Identity Data		
URL	http://www.meinertz	
Model	PL07 09 5/4	
Manufacturer	Meinertz	"Meinertz"
Keynote	PL07 09 5/4	
GoGetNo	6947	6947
Type Comments		
Description		
Assembly Code		
Cost		
Energy Analysis		
Thermal Performance	341.082497	Length * CTP / 1000 mm
Other		
TP	9	
RW3	133.00	if(Flip Convector Side, Count Grill Side 2 * 24 mm + 13 mm, Count Grill Side 1 * 24 mm + 13 mm)
RW2	203.00	(Count Grill Main - 1) * 24 mm + 11 mm
RW1	109.00	if(Flip Convector Side, Count Grill Side 1 * 24 mm + 13 mm, Count Grill Side 2 * 24 mm + 13 mm)
RW	445.00	RW1 + RW2 + RW3
FC	360.000°	360°
Count Grill Side 2	4	Count Grill Total - Count Grill Main - Count Grill Side 1
Center Rad 2	2392.00	Center Rad + RW2
Depth Outer	70.00	if(Flip Convector Side, 20 mm, 70 mm)
Inner rad	2080.00	R - RW
Depth Inside	20.00	if(Flip Convector Side, 70 mm, 20 mm)
Count Grill Total	18	(Width - 13 mm) / 24 mm
Count Grill Side 1	5	(Width Inner Side - 13 mm) / 24 mm
Count Grill Main	9	(Width Convector - 11 mm) / 24 mm + 1
Center Rad	2189.00	Inner rad + RW1
CTP	339	if(TP = 3, 145, if(TP = 4, 191, if(TP = 5, 231, if(TP = 6, 262, if(TP = 7, 287, if(TP = 8, 317, if(TP

Family Types: New..., Rename..., Delete

Parameters: Add..., Modify..., Remove

OK Cancel Apply Help

Figure A.02
 PLSK 09 05/04
 Family Parameter Reference

A.03 Type - PLSK 10 05/05

Family Types

Name:

Parameter	Value	Formula
Graphics		
Flip Convector Side		
Materials and Finishes		
Grill	RAL 7024	
Frame	RAL 7024	
Dimensions		
Width	493.00	
R	2525.00	$((K \wedge 2) / (8 * H) + (H / 2))$
Width Outer Side	122.00	Width - Width Inner Side - Width Convector
Length	1006.14	$2 * 3.14 * R * Alpha / FC$
Width Inner Side	144.00	
K	1000.00	
H	50.00	
Depth	100.00	
Width Convector	227.00	
Alpha	22.842°	$2 * \text{acos}((R - H) / R)$
Identity Data		
URL	http://www.meinertz	
Model	PL07 10 5/5	
Manufacturer	Meinertz	"Meinertz"
Keynote	PL07 10 5/5	
GoGetNo	6947	6947
Type Comments		
Description		
Assembly Code		
Cost		
Energy Analysis		
Thermal Performance	361.205358	Length * CTP / 1000 mm
Other		
TP	10	
RW3	133.00	if(Flip Convector Side, Count Grill Side 2 * 24 mm + 13 mm, Count Grill Side 1 * 24 mm + 13 mm)
RW2	227.00	(Count Grill Main - 1) * 24 mm + 11 mm
RW1	133.00	if(Flip Convector Side, Count Grill Side 1 * 24 mm + 13 mm, Count Grill Side 2 * 24 mm + 13 mm)
RW	493.00	RW1 + RW2 + RW3
FC	360.000°	360°
Count Grill Side 2	5	Count Grill Total - Count Grill Main - Count Grill Side 1
Center Rad 2	2392.00	Center Rad + RW2
Depth Outer	70.00	if(Flip Convector Side, 20 mm, 70 mm)
Inner rad	2032.00	R - RW
Depth Inside	20.00	if(Flip Convector Side, 70 mm, 20 mm)
Count Grill Total	20	(Width - 13 mm) / 24 mm
Count Grill Side 1	5	(Width Inner Side - 13 mm) / 24 mm
Count Grill Main	10	(Width Convector - 11 mm) / 24 mm + 1
Center Rad	2165.00	Inner rad + RW1
CTP	359	if(TP = 3, 145, if(TP = 4, 191, if(TP = 5, 231, if(TP = 6, 262, if(TP = 7, 287, if(TP = 8, 317, if(TP

Family Types: New... Rename... Delete

Parameters: Add... Modify... Remove

OK Cancel Apply Help

Figure A.03
 PLSK 10 05/05
 Family Parameter Reference

A.04 Type - PLSK 11 06/05

Family Types

Name:

Parameter	Value	Formula
Graphics		
Flip Convector Side		
Materials and Finishes		
Grill	RAL 7024	
Frame	RAL 7024	
Dimensions		
Width	541.00	
R	2525.00	$((K \wedge 2) / (8 * H) + (H / 2))$
Width Outer Side	122.00	Width - Width Inner Side - Width Convector
Length	1006.14	$2 * 3.14 * R * Alpha / FC$
Width Inner Side	168.00	
K	1000.00	
H	50.00	
Depth	100.00	
Width Convector	251.00	
Alpha	22.842°	$2 * \text{acos}((R - H) / R)$
Identity Data		
URL	http://www.meinertz	
Model	PL07 11 6/5	
Manufacturer	Meinertz	"Meinertz"
Keynote	PL07 11 6/5	
GoGetNo	6947	6947
Type Comments		
Description		
Assembly Code		
Cost		
Energy Analysis		
Thermal Performance	384.346649	Length * CTP / 1000 mm
Other		
TP	11	
RW3	157.00	if(Flip Convector Side, Count Grill Side 2 * 24 mm + 13 mm, Count Grill Side 1 * 24 mm + 13 mm)
RW2	251.00	(Count Grill Main - 1) * 24 mm + 11 mm
RW1	133.00	if(Flip Convector Side, Count Grill Side 1 * 24 mm + 13 mm, Count Grill Side 2 * 24 mm + 13 mm)
RW	541.00	RW1 + RW2 + RW3
FC	360.000°	360°
Count Grill Side 2	5	Count Grill Total - Count Grill Main - Count Grill Side 1
Center Rad 2	2368.00	Center Rad + RW2
Depth Outer	70.00	if(Flip Convector Side, 20 mm, 70 mm)
Inner rad	1984.00	R - RW
Depth Inside	20.00	if(Flip Convector Side, 70 mm, 20 mm)
Count Grill Total	22	(Width - 13 mm) / 24 mm
Count Grill Side 1	6	(Width Inner Side - 13 mm) / 24 mm
Count Grill Main	11	(Width Convector - 11 mm) / 24 mm + 1
Center Rad	2117.00	Inner rad + RW1
CTP	382	if(TP = 3, 145, if(TP = 4, 191, if(TP = 5, 231, if(TP = 6, 262, if(TP = 7, 287, if(TP = 8, 317, if(TP

Family Types:

Parameters:

Figure A.04
 PLSK 11 06/05
 Family Parameter Reference

A.05 Type - PLSK 12 06/06

Family Types

Name:

Parameter	Value	Formula
Graphics		
Flip Convector Side		
Materials and Finishes		
Grill	RAL 7024	
Frame	RAL 7024	
Dimensions		
Width	589.00	
R	2525.00	$((K \wedge 2) / (8 * H) + (H / 2))$
Width Outer Side	146.00	Width - Width Inner Side - Width Convector
Length	1006.14	$2 * 3.14 * R * Alpha / FC$
Width Inner Side	168.00	
K	1000.00	
H	50.00	
Depth	100.00	
Width Convector	275.00	
Alpha	22.842°	$2 * \text{acos}((R - H) / R)$
Identity Data		
URL	http://www.meinertz	
Model	PL07 12 6/6	
Manufacturer	Meinertz	"Meinertz"
Keynote	PL07 12 6/6	
GoGetNo	6947	6947
Type Comments		
Description		
Assembly Code		
Cost		
Energy Analysis		
Thermal Performance	406.481796	Length * CTP / 1000 mm
Other		
TP	12	
RW3	157.00	if(Flip Convector Side, Count Grill Side 2 * 24 mm + 13 mm, Count Grill Side 1 * 24 mm + 13 mm)
RW2	275.00	(Count Grill Main - 1) * 24 mm + 11 mm
RW1	157.00	if(Flip Convector Side, Count Grill Side 1 * 24 mm + 13 mm, Count Grill Side 2 * 24 mm + 13 mm)
RW	589.00	RW1 + RW2 + RW3
FC	360.000°	360°
Count Grill Side 2	6	Count Grill Total - Count Grill Main - Count Grill Side 1
Center Rad 2	2368.00	Center Rad + RW2
Depth Outer	70.00	if(Flip Convector Side, 20 mm, 70 mm)
Inner rad	1936.00	R - RW
Depth Inside	20.00	if(Flip Convector Side, 70 mm, 20 mm)
Count Grill Total	24	(Width - 13 mm) / 24 mm
Count Grill Side 1	6	(Width Inner Side - 13 mm) / 24 mm
Count Grill Main	12	(Width Convector - 11 mm) / 24 mm + 1
Center Rad	2093.00	Inner rad + RW1
CTP	404	if(TP = 3, 145, if(TP = 4, 191, if(TP = 5, 231, if(TP = 6, 262, if(TP = 7, 287, if(TP = 8, 317, if(TP

Family Types:

Parameters:

Figure A.05
 PLSK 12 06/06
 Family Parameter Reference

A.06 Type - PLSK 13 07/06

Family Types

Name:

Parameter	Value	Formula
Graphics		
Flip Convector Side		
Materials and Finishes		
Grill	RAL 7024	
Frame	RAL 7024	
Dimensions		
Width	637.00	
R	2525.00	$((K \wedge 2) / (8 * H) + (H / 2))$
Width Outer Side	146.00	Width - Width Inner Side - Width Convector
Length	1006.14	$2 * 3.14 * R * Alpha / FC$
Width Inner Side	192.00	
K	1000.00	
H	50.00	
Depth	100.00	
Width Convector	299.00	
Alpha	22.842°	$2 * \text{acos}((R - H) / R)$
Identity Data		
URL	http://www.meinertz	
Model	PL07 13 7/6	
Manufacturer	Meinertz	"Meinertz"
Keynote	PL07 13 7/6	
GoGetNo	6947	6947
Type Comments		
Description		
Assembly Code		
Cost		
Energy Analysis		
Thermal Performance	426.604657	Length * CTP / 1000 mm
Other		
TP	13	
RW3	181.00	if(Flip Convector Side, Count Grill Side 2 * 24 mm + 13 mm, Count Grill Side 1 * 24 mm + 13 mm)
RW2	299.00	(Count Grill Main - 1) * 24 mm + 11 mm
RW1	157.00	if(Flip Convector Side, Count Grill Side 1 * 24 mm + 13 mm, Count Grill Side 2 * 24 mm + 13 mm)
RW	637.00	RW1 + RW2 + RW3
FC	360.000°	360°
Count Grill Side 2	6	Count Grill Total - Count Grill Main - Count Grill Side 1
Center Rad 2	2344.00	Center Rad + RW2
Depth Outer	70.00	if(Flip Convector Side, 20 mm, 70 mm)
Inner rad	1888.00	R - RW
Depth Inside	20.00	if(Flip Convector Side, 70 mm, 20 mm)
Count Grill Total	26	(Width - 13 mm) / 24 mm
Count Grill Side 1	7	(Width Inner Side - 13 mm) / 24 mm
Count Grill Main	13	(Width Convector - 11 mm) / 24 mm + 1
Center Rad	2045.00	Inner rad + RW1
CTP	424	if(TP = 3, 145, if(TP = 4, 191, if(TP = 5, 231, if(TP = 6, 262, if(TP = 7, 287, if(TP = 8, 317, if(TP

Family Types: New..., Rename..., Delete

Parameters: Add..., Modify..., Remove

OK Cancel Apply Help

Figure A.06
PLSK 13 07/06
Family Parameter Reference

A.07 Type – PLSK 14 07/07

Family Types

Name:

Parameter	Value	Formula
Graphics		
Flip Convector Side		
Materials and Finishes		
Grill	RAL 7024	
Frame	RAL 7024	
Dimensions		
Width	685.00	
R	2525.00	$((K \wedge 2) / (8 * H) + (H / 2))$
Width Outer Side	170.00	Width - Width Inner Side - Width Convector
Length	1006.14	$2 * 3.14 * R * Alpha / FC$
Width Inner Side	192.00	
K	1000.00	
H	50.00	
Depth	100.00	
Width Convector	323.00	
Alpha	22.842°	$2 * \text{acos}((R - H) / R)$
Identity Data		
URL	http://www.meinertz	
Model	PL07 14 7/7	
Manufacturer	Meinertz	"Meinertz"
Keynote	PL07 14 7/7	
GoGetNo	6947	6947
Type Comments		
Description		
Assembly Code		
Cost		
Energy Analysis		
Thermal Performance	446.727519	Length * CTP / 1000 mm
Other		
TP	14	
RW3	181.00	if(Flip Convector Side, Count Grill Side 2 * 24 mm + 13 mm, Count Grill Side 1 * 24 mm + 13 mm)
RW2	323.00	(Count Grill Main - 1) * 24 mm + 11 mm
RW1	181.00	if(Flip Convector Side, Count Grill Side 1 * 24 mm + 13 mm, Count Grill Side 2 * 24 mm + 13 mm)
RW	685.00	RW1 + RW2 + RW3
FC	360.000°	360°
Count Grill Side 2	7	Count Grill Total - Count Grill Main - Count Grill Side 1
Center Rad 2	2344.00	Center Rad + RW2
Depth Outer	70.00	if(Flip Convector Side, 20 mm, 70 mm)
Inner rad	1840.00	R - RW
Depth Inside	20.00	if(Flip Convector Side, 70 mm, 20 mm)
Count Grill Total	28	(Width - 13 mm) / 24 mm
Count Grill Side 1	7	(Width Inner Side - 13 mm) / 24 mm
Count Grill Main	14	(Width Convector - 11 mm) / 24 mm + 1
Center Rad	2021.00	Inner rad + RW1
CTP	444	if(TP = 3, 145, if(TP = 4, 191, if(TP = 5, 231, if(TP = 6, 262, if(TP = 7, 287, if(TP = 8, 317, if(TP

Family Types:

Parameters:

Figure A.05
 PLSK 14 07/07
 Family Parameter Reference